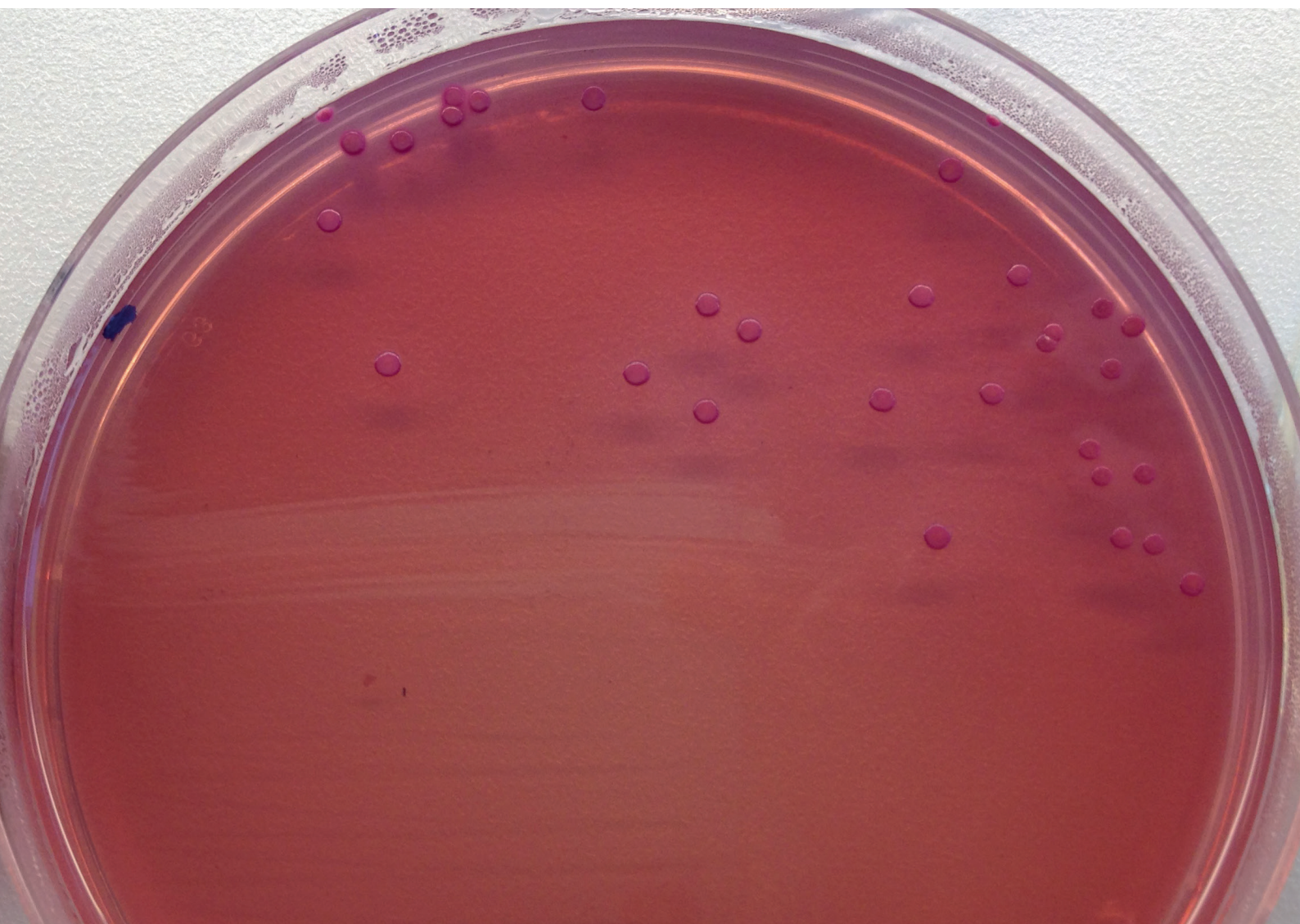


The 4th EURL-AR PROFICIENCY TEST ON SELECTIVE ISOLATION OF E. COLI WITH PRESUMPTIVE ESBL OR AMPC PHENOTYPES FROM MEAT OR CAECAL SAMPLES - 2018



Jette Sejer Kjeldgaard, Susanne Karlsdose Pedersen, Valeria Bortolaia, Rene S. Hendriksen

THE 4th EURL-AR PROFICIENCY TEST ON SELECTIVE ISOLATION OF *E. COLI*
WITH PRESUMPTIVE ESBL OR AMPC PHENOTYPES FROM MEAT OR CAECAL
SAMPLES – 2018

1. edition, December 2019

Copyright: National Food Institute, Technical University of Denmark

Photo: Lina Cavaco

ISBN: 978-87-93565-63-0

The report is available at

www.food.dtu.dk

National Food Institute

Technical University of Denmark

Kemitorvet

Building 202

DK-2800 Kgs. Lyngby



Index

Index.....	3
1. Introduction.....	4
2. Materials and Methods.....	5
2.1 Participants in EQAS 2018	5
2.2 Preparation of samples	5
2.3 Isolation and identification of ESBL, AmpC or carbapenemase producing <i>E. coli</i> from meat and caecal samples.....	7
2.4 Antimicrobial susceptibility testing.....	7
2.5 Distribution	7
2.6 Procedure.....	8
3. Results.....	9
3.1 Overall results of selective isolation.....	9
3.2 Methods used by EQAS-participants.....	10
3.3 ESBL /AmpC and carbapenemase producing <i>E. coli</i> isolation and identification	11
3.4 Antimicrobial susceptibility testing.....	11
3.5 ESBL/AmpC phenotypic testing conclusions.....	13
4. Discussion	14
4.1 ESBL and AmpC and carbapenemase-producing <i>E. coli</i> isolation and identification	14
4.2 Antimicrobial susceptibility testing.....	14
4.3 ESBL /AmpC phenotypic testing conclusions.....	15
5. Conclusion.....	15
6. References	15
7. Appendices.....	16
Appendix 1. Pre-notification EURL-AR EQAS matrix 2018	
Appendix 2. List of participants	
Appendix 3. Expected results	
Appendix 4. Protocol EQAS matrix 2018	
Appendix 5. Examples of Test forms EQAS matrix 2018	



1. Introduction

This report describes and summarises results from the fourth matrix-based proficiency test conducted by The National Food Institute (DTU Food) as the EU Reference Laboratory for Antimicrobial Resistance (EURL-AR) as an External Quality Assurance System (EQAS). This proficiency test focuses on selective isolation of extended spectrum beta-lactamase (ESBL) and AmpC-producing *E. coli* from meat and caecal samples of animal origin and antimicrobial susceptibility testing (AST) of the isolated *E. coli*. In addition, the proficiency test includes optional isolation of carbapenemases and OXA-48-producing *E. coli*.

Extended spectrum beta-lactamase (ESBL) and AmpC-producing *E. coli* continue to spread in food producing animals. In 2013, the European Commission (EC) decided to include the isolation of ESBL and AmpC-producing *E. coli* as mandatory parts of the EU monitoring and this started during 2015. The screening includes matrix samples consisting of either meat or caecal samples of animal origin in the EU Member States (MS) and affiliated countries according to a common protocol defined by the EC and validated by the EURL-AR (EURL-AR, 2017).

In 2016 the EQAS was extended also to include carbapenemase and/or OXA-48-producing *E. coli*, thereby including the optional isolation of these using the EURL-AR selective isolation protocol on agar plates suitable for isolation of carbapenemase-producing *E. coli* (EURL-AR, 2017).

Similar to the previous EURL-AR matrix based EQAS', the aim of this specific EQAS was to i) monitor the capacity of the National Reference Laboratories (NRL-AR) for isolation, identification and AST of ESBL/AmpC or carbapenemase-producing *E. coli*, ii) identify laboratories which may need assistance to improve their performance in isolation and AST

of *E. coli* from matrices, and iii) identify potential problems or focus areas for future training and research.

From January 2016, the laboratories should have implemented the methods and have started the monitoring on meat and caecal samples of poultry origin. The participation in this EQAS may be used to assess retrospectively the quality of data provided to the European Food Safety Agency (EFSA).

In reading this report, the following important considerations should be taken into account:

1) Expected results were generated by performing Minimum Inhibitory Concentration (MIC) determination for all test strains prior to selection of strains and MIC's were confirmed upon selection of strains at the Technical University of Denmark, National Food Institute (DTU Food). The genetic basis for resistance was known, as all the selected test strains had been whole-genome sequenced (WGS). The MIC determination was repeated after preparation of the matrix samples of meat and caecal, which revealed a risk for deviating phenotypic results (See section 3.1).

2) No thresholds have been set in advance to evaluate the acceptance of the performance of the participating laboratories and therefore the results will not be classified as above or below a threshold, but will be evaluated case by case.

3) Evaluation of a result as 'deviating from the expected interpretation' should be carefully analysed in a self-evaluation performed by the participant, including considerations of corrective actions in the laboratory. Note that since methods used for MIC determination has limitations, it is not considered a mistake to obtain a one-fold dilution difference in the MIC of a specific antimicrobial when testing the same strains. If, however, the expected MIC is close to the breakpoint value for categorising the strain



as susceptible or resistant, one two-fold dilution difference (which is acceptable) may result in two different interpretations, i.e. the same strain can be categorized as susceptible and resistant. This result will be evaluated as correct in one case, but incorrect when the evaluation is based on AST interpretations. In the organization of the EQAS, we try to avoid these situations by choosing test strains with MIC values distant from the cut-offs for resistance, which is not always feasible for all strains and all antimicrobials. Therefore, the EURL-AR network unanimously established in 2008 that if there are less than 75% correct results for a specific strain/antimicrobial combination, the reasons for this situation must be further examined and, on selected occasions explained in details case by case, these results may subsequently be omitted from the evaluation report.

The data in this report is presented with laboratory codes. A laboratory code is known only by the individual laboratory, whereas the entire list of laboratories and their codes is confidential and known only by relevant representatives of the EURL-AR and the EU Commission. All conclusions are public.

This fourth matrix EQAS was organized by the EURL-AR at the National Food Institute (DTU Food), Kgs. Lyngby, Denmark. The report was approved in its draft version by a technical advisory group composed by competent representatives from all NRL-ARs, who meets annually at the EURL-AR workshop, and no substantial changes were made in this final report.

2. Materials and Methods

2.1 Participants in EQAS 2018

A pre-notification (App. 1), announcing the matrix EQAS 2018, was distributed on the 28th of August 2018 by e-mail to the designated NRLs including all EU countries and Iceland, Norway and Switzerland. In total 35 laboratories participated in the matrix EQAS (App. 2) involving one NRL from each of the 28 MS (two from two countries, analysing meat and caecal sample in different laboratories), and from Iceland and Norway, plus additional laboratories. As results from only one laboratory per country are included in this report, 32 laboratory results from 30 countries are described. The exception was the two countries, who has different laboratories enrolled for handling meat and caecal samples, and therefore had two different NRLs enrolled. Switzerland did not participate, as the samples were delayed in the shipping process beyond reasonable durability.

Furthermore, one additional laboratory from each of the Netherlands, Spain and United Kingdom participated. These were invited based on their participation in previous EQAS iterations and/or affiliation to the EU network and provided results but were not included further in the report. Participants from non-EU MS were charged a fee for participation whereas participation was free of charge for EU MS, but each laboratory was expected to cover expenses associated with the analyses. The European countries participating are marked on map in Figure 1.

2.2 Preparation of samples

Eight samples were prepared and dispatched for isolation of ESBL, AmpC or carbapenemase-producing *E. coli*, including identification, and antimicrobial susceptibility testing (AST) of the obtained isolates. The samples included five chicken meat and three chicken caecal samples and were either prepared by spiking with test strains or unmodified.

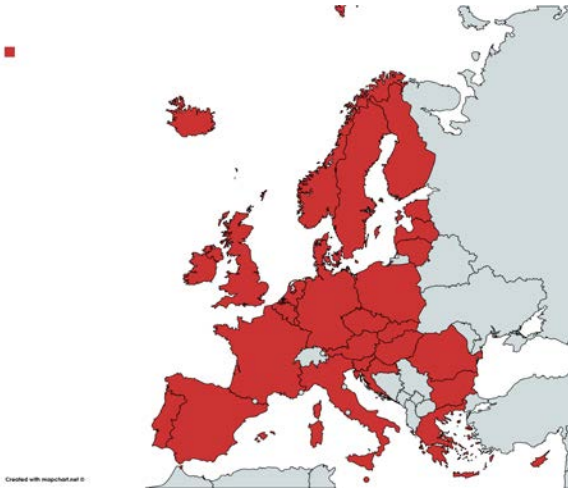


Figure 1 Countries participating in matrix EQAS 2018

The meat used to prepare the samples was minced chicken meat of Danish origin (raised, slaughtered and packed in Denmark) acquired in local supermarkets (at least three batches were bought in sufficient amount for covering both the pre-tests and preparation of the samples). The meat was pretested using the official method for selective isolation of *E. coli* producing ESBL, AmpC or carbapenemase to ensure the batch used was negative for those and contained some background flora. A batch fulfilling these criteria was chosen for preparation of aliquots of 25 g of meat that were either used directly as blank samples or spiked as follows.

The test isolates used in the spiking of meat samples within the EQAS matrix 2018 were prepared in advance and sub-cultured the day before sample preparation. For the sample preparation and standardization of the spiking, suspensions equal to McFarland 0.5 were prepared in saline tubes with the relevant isolates to contain about 10^8 CFU/mL, as confirmed by viable counts of serial dilutions on Luria Bertani (LB) agar plates. The standardized suspensions were further diluted in ten-fold dilutions and the meat samples (25 g) were spiked with 25 μ l of the chosen dilutions. The spiking dilutions were chosen based on the results obtained in the previous matrix EQAS

2016 and 2017. The final inoculum found in the samples in this EQAS was expected to be approx. 10^3 CFU/g meat, for the samples EURL-M-4.1, M-4.2, M-4.4 and M-4.5. The sample M-4.3 was spiked as mentioned above, however with a susceptible *E. coli* strain (ATCC 25922) and therefore expected to be negative.

One slaughterhouse provided on Sept 29th three batches of 50 chicken caecal samples from different flocks. These samples were pooled per flock and tested using the official selective isolation protocol for ESBL, AmpC and carbapenemase-producing *E. coli*.

One ESBL-negative caecal batch was chosen for preparation of the matrix caecal samples for the EQAS strains. Thereby 1 g aliquots of pooled caecal content was spiked with 10 μ l of a dilution containing 106 CFU/ml, causing an expected spiking level of 104 CFU/g for the samples M-4.7 and M-4.8, while sample M-4.6 was kept as blank.

The minimal inhibitory concentrations (MIC) of selected antimicrobials were determined using broth microdilution method both for the strains used for spiking during the preparation work and for the isolates obtained in the homogeneity testing after sample preparation to generate expected results (App. 3).

For follow-up on the stability of the inoculum in the matrix samples after shipping, repeated testing of isolation of test strains was performed on sets the eight samples in four time points after shipment (during two weeks). In this period, the meat and caecal samples were kept at 4°C, to mimic the conditions in the shipment parcel. One of the extra sample sets was shipped to Iceland, as the original set of samples were delayed during shipping.



2.3 Isolation and identification of ESBL, AmpC or carbapenemase producing *E. coli* from meat and caecal samples

The official protocols for selective isolation and identification of the ESBL, AmpC and/or carbapenemase-producing *E. coli* isolates contained in the samples were available on the EURL website, <http://www.eurl-ar.eu> (App. 4). For the confirmation of *E. coli* isolates, different methods were allowed as these are not specified in the legislation (EU Commission implementing decision on the monitoring and reporting antimicrobial resistance in zoonotic and commensal bacteria 2013/652/EU). The description of the method used for selective isolation of presumptive ESBL, AmpC or carbapenemase-producing *E. coli* as well as species identification was requested as part of the methods sheet to be completed in the database upload system.

2.4 Antimicrobial susceptibility testing

The panels of antimicrobials recommended for AST in this proficiency test are those included in the EU Commission implementing decision on the monitoring and reporting Antimicrobial resistance in zoonotic and commensal bacteria 2013/652/EU (Table 1).

Guidelines for performing the antimicrobial susceptibility testing using dilution methods were set according to the Clinical and Laboratory Standards Institute (CLSI) document – M7 (2018) “Methods for Dilution Antimicrobial Susceptibility Tests for Bacteria That Grow Aerobically; Approved Standard - 11th Edition” and whenever commercial methods were used, the guidelines of the manufacturer were followed.

MIC results were interpreted by using EUCAST epidemiological cut-off values (www.eucast.org), as included in the regulation referred above or as

recommended by EFSA and described in the EQAS protocol (App. 4). Results of the ESBL confirmatory testing were interpreted according to the recommendations by EFSA and as referred in the regulation, using MIC testing on the second panel of antimicrobials, which is intended to be used every time a strain is found resistant to either cefotaxime, ceftazidime or meropenem.

2.5 Distribution

The meat samples were frozen at -80°C and kept at this temperature after preparation and until the time for shipment. The caecal samples were sent shortly after preparation, and therefore kept at 4°C until the time for shipment. At the day of shipment, the samples were tightly packed in thermos boxes with cooling elements, frozen at -80°C. The parcels contained the eight samples in tubes, and an additional tube contained a temperature logger to register the temperature at 15 min intervals during transport. Furthermore, the parcel contained a welcome letter with the login and password to the online database for the data upload and a labelled envelope for returning the temperature logger to the EURL-AR.



Table 1. Panel of antimicrobials recommended for susceptibility testing of bacteria included in this EQAS 2018 component

<i>Escherichia coli</i> EUVSEC	<i>Escherichia coli</i> EUVSEC2
Ampicillin, AMP	Cefepime, FEP
Azithromycin, AZI	Cefotaxime + clavulanic acid (F/C)
Cefotaxime, FOT	Cefotaxime, FOT
Ceftazidime, TAZ	Cefoxitin, FOX
Chloramphenicol, CHL	Ceftazidime, TAZ
Ciprofloxacin, CIP	Ceftazidime+ clavulanic acid (T/C)
Colistin, COL	Ertapenem, ETP
Gentamicin, GEN	Imipenem, IMI
Meropenem, MERO	Meropenem, MERO
Nalidixic acid, NAL	Temocillin, TRM
Sulfamethoxazole, SMX	
Tetracycline, TET	
Tigecycline, TGC	

The protocol for the EQAS and the test forms were available online on the EURL-AR website, <http://www.eurl-ar.eu> before launching this EQAS.

The thermos boxes used for the shipment of samples were enclosed in double pack containers and sent to the selected laboratories according to the [International Air Transport Association](#) (IATA) regulations as “Biological Substance category B” classified UN3373. The parcels were dispatched from DTU-Food October 1st 2018.

2.6 Procedure

The laboratories were instructed to download the protocol and test forms (App. 4 and 5), from <http://www.eurl-ar.eu> and to process the samples following the EU protocol for selective isolation of presumptive ESBL, AmpC and carbapenemase producing *E. coli* from either meat or caecal samples, precisely as they would normally do for the EFSA monitoring. For the results collection the NRLs were instructed to upload of the data in the web based database, which was designed and prepared for this EQAS

and opened after sample shipment and until the reporting deadline.

After completion of the tests, the laboratories were requested to enter the obtained results into the electronic sheet in the EURL-AR web based database through a secured individual login (App 5). The database was activated on the 22th of October 2018, and was closed December 7th 2018.

For the first part of the results of the selective isolation procedure for ESBL /AmpC and for carbapenemases, the results obtained from the isolation procedures samples were evaluated separately by defining the samples as positive if an isolate was obtained and positively identified as *E. coli*. Additionally, the results of susceptibility testing of the obtained isolates using both MIC panels were analysed separately in similar way as to the similarly to the *E. coli* AST EQAS, including the read values of MIC and their interpretations. As a conclusion of the susceptibility testing, the participants were asked to classify the isolates obtained according to the defined EFSA criteria for interpretation of ESBL/Ampc and/or carbapenemase producing



isolates.

After the deadline, the qualitative results indicating if the samples were positive or negative for ESBL/AmpC, or carbapenemase-producing *E. coli* (OXA-48 and other), as well as the interpretations of the susceptibility tests

3. Results

Upon arrival of the parcels, the participants were requested to provide more information in a small introductory questionnaire on the database, including details on sample reception (measured temperature and date/time), the monitoring activities, and the methods used in their laboratory. The registration of the temperature was extracted and read to provide the temperature ranges along the shipment and at sample reception/opening. All samples were registered to be between -1°C and 4°C at arrival inferred from the temperature at opening time from the temperature logger registration and thereby all samples were expected to be in good conditions for testing at the time for opening of the parcels. Exceptions were samples sent to Iceland and Switzerland, which were both delayed during shipment. A new parcel with samples was sent to Iceland, whereas Switzerland chose not to participate in the proficiency test, due to the delayed samples.

3.1 Overall results of selective isolation

The number of possible test results for ESBL/AmpC qualitative isolation considered for this report was 240 tests; eight samples from each of 30 countries. As the meat and caecal matrices have a natural background of bacteria from the animal itself, there is a high possibility of presence of *E. coli* and other *Enterobacteriaceae*, which can even include ESBL producing bacteria, despite the pre-testing of both meat and caecal samples. In the chicken meat samples, a few deviations were seen in the

results, and the conclusion on the observed *E. coli* phenotypes were evaluated against the expected results and scored as correct or incorrect. As no threshold is agreed the performance was evaluated case by case and not classified into acceptable or unacceptable based on the deviation percentage.

isolation of resistant *E. coli*. The sample M-4.3, which should be negative of ESBL/AmpC or carbapenemase producing *E. coli*, were in three laboratories found positive, as growth occurred on the selective agaplates. The EURL-AR did also notice slight growth in some of the M-4.3 samples stored for testing after shipment (ESBL phenotype), and this must be regarded as the natural deviation in the background bacteria of the meat. On the other hand, two laboratories failed to isolate M-4.2. The EURL-AR did not have any problems in retrieving these isolates up to 14 days after shipment of the samples.

The caecal samples have previously been problematic, as it has proven difficult to find *E. coli* isolates with adequate stability and survival in this matrix. This has mainly been a problem for pig caecal samples, but it turned out to be problematic also for one of the isolates spiked to chicken caecal in this year's test. As such, 17 of the participating 33 laboratories did not retrieve the isolate spiked into sample M-4.8. In the tests performed by the EURL-AR, this sample was positive on the day of shipment (Oct. 1st) but in the next sampling (Oct. 3rd) and all following sample points, the EURL-AR did not isolate anything from the caecal sample M-4.8. Thus, it will not count as a deviation that this sample was negative. As such, only 223 tests were included in the evaluation. Furthermore, two laboratories failed to isolate M-4.7. The EURL-AR did not have any problems in retrieving this isolate up to 14 days after shipment of the samples. These results are summarized in Table 2 and further discussed in section 3.3.



Table 2. The overall performance of ESBL/AmpC isolation and identification, 2018.

Isolation of ESBL /AMPC from samples		Correctly classified samples	
Number of performed tests		Number of correct tests	
N	%	N	%
223	100	214	96.0
Number of expected negative tests		Number of correctly identified negative tests	
N	%	N	%
60	27	57	95
Number of expected positive tests		Number of correctly identified positive tests	
N	%	N	%
163	73	159	97.5

3.2 Methods used by EQAS-participants

In this trial, 28 participating NRL's reported results for all the eight samples sent. Two laboratories reported only results for the meat samples (Labs, #38, and #41) and two laboratories reported only results for the caecal samples (Labs #32 and #58). All 32 participating laboratories, which have submitted results, participated in the ESBL and AmpC isolation and performed the identification and susceptibility testing of the respective isolates. Eight laboratories reported that they did not perform the optional carbapenemases selective isolation. The number of qualitative isolation tests results reported was variable, including results for three to eight samples, depending on how many samples were tested (four participants only tested meat or caecal sample while most others tested both), for the antimicrobial susceptibility test it depended on how many isolates were found and further tested in the MIC panels.

Information on the methods used for isolation, identification and typing was collected from the participants through the database.

Most laboratories (n=32) reported that isolation had been performed following the exact procedures described in the protocol provided. One lab reported using a lower incubation temperature (41.5 °C). The species identification was performed using MALDI TOF (n=13), biochemical tests (n=8), or chromogenic agar plating (n=9), and PCR using specific targets to confirm the ID (n=2). Additionally, some laboratories reported using second and third identification methods as supplement.

The broth microdilution testing was performed using the antimicrobials and ranges defined under the EU Commission regulation 652/2013 for testing the isolated and identified *E. coli* isolates using panel 1 (EUVSEC). Additional AST of the presumptive ESBL/AmpC and/or carbapenemase isolates was performed using panel 2 (EUVSEC2) if relevant and interpretation of the results according to the EFSA criteria for ESBL/AmpC and carbapenemase phenotypic classification.



3.3 ESBL /AmpC and carbapenemase producing *E. coli* isolation and identification

ESBL/AmpC

The total amount of test results was 223 tests for the ESBL/AmpC isolation qualitative results. All in all, 214 tests were assigned the correct ESBL/AmpC or carbapenemase phenotype, corresponding to 96 % correct results (Table 2). From the 60 samples expected to be negative all but three were correctly assigned (95 %). Regarding the 163 samples expected to be positive, all but four were correctly positive (97.5 %; disregarding the impaired isolation from the sample M-4.8). These four deviations were observed by Lab #21 and #36 that determined the meat sample M-4.2 and by Lab #34 and #39 that determined the caecal sample M-4.7 as negative (Table 2).

Other carbapenemases and OXA-48

The specific isolation of presumptive carbapenemase producing *E. coli* was performed by extending the protocol to include isolation on CARBA selective agar plates as described in the EURL-AR protocols. Eight labs did not perform the optional carbapenemase selective isolation, but defined results based on the findings in the ESBL/AmpC selective method and AST results.

The plates used for this purpose were chosen by the laboratories as the protocol defines that any suitable plates for selective isolation of carbapenemase- and OXA-48-producing *E. coli* may be used. Most participants declared the use of the chromogenic agar ChromID CARBA and ChromID OXA or CARBA Smart combination plates (as reported by eight and six participants, respectively). The majority of participants did not report the brand of plates being used for this purpose, but report that the EURL-AR protocol was followed.

3.4 Antimicrobial susceptibility testing

A total of 3816 AST results were uploaded and 3767 (98.7 %) of these were correct. The 32 labs uploaded a variable number of results, depending on the samples found positive and isolates tested in one or both panels, ranging from 48 to 144 test results per participant.

Of the 49 deviations detected, 26 were caused by 1-step MIC deviations, which in some cases (mainly for FEP, CHL and NAL) resulted in a different susceptible/resistant interpretation, which is still regarded as acceptable deviations (Appendix 6b). Thus, only 23 deviations will be regarded as true deviations (unacceptable deviations; Appendix 6a), either due to incorrect MIC, compared to the expected, or incorrect interpretation of susceptible/resistant phenotype. A large part of these deviations (43 %) was due to a single problematic strain (M-4.4 in Lab #17).

The analysis per laboratory identified nine laboratories with no deviations and 21 laboratories with no unacceptable deviations, while the others had deviation percentages ranging from 0.5 % to 4.7 %. (Figure 2). As the performance on the AST depends on the isolation and identification procedures, no threshold was set for acceptance as the capacity for performing AST of *E. coli* is analysed more accurately in the *E. coli* AST EQAS. However, the AST results show more variation and more deviations compared to the ESBL/AmpC EQAS performed in 2017.

In the analysis of deviations per antimicrobial, it was observed that the highest deviation percentages was found for chloramphenicol (CHL; 10 %) followed by cefepime (FEP; 5.4 %) and nalidixic acid (NAL; 4.1 %), mainly due to MIC levels being close to breakpoints (Figure 3). For the deviations regarded as not acceptable, chloramphenicol (CHL; 3.0 %) and imipenem (IMI; 2.4 %) had the highest deviations (Figure

3).

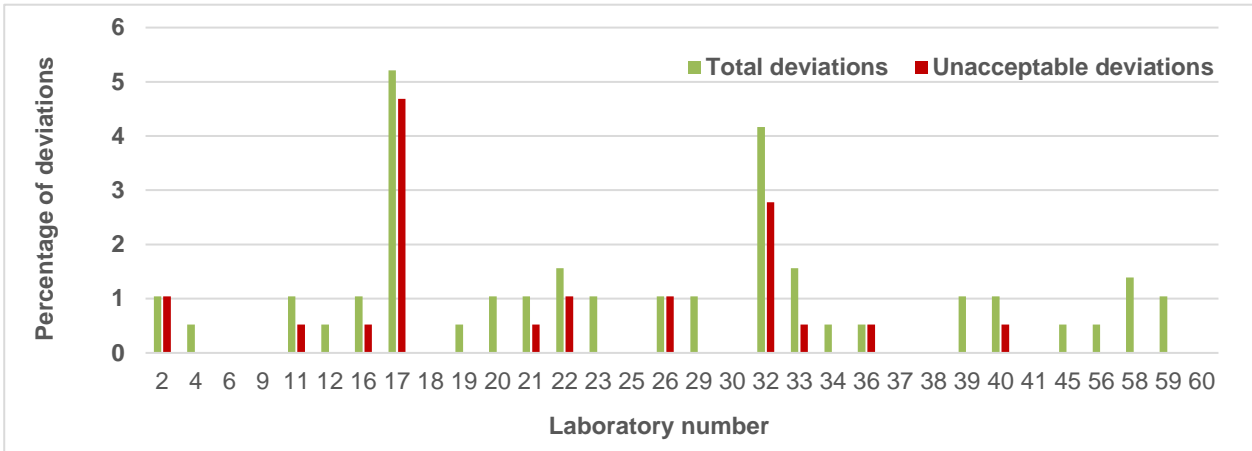


Figure 2. Percentages of total (green) and unacceptable (red) deviations in antimicrobial susceptibility testing per participating laboratory

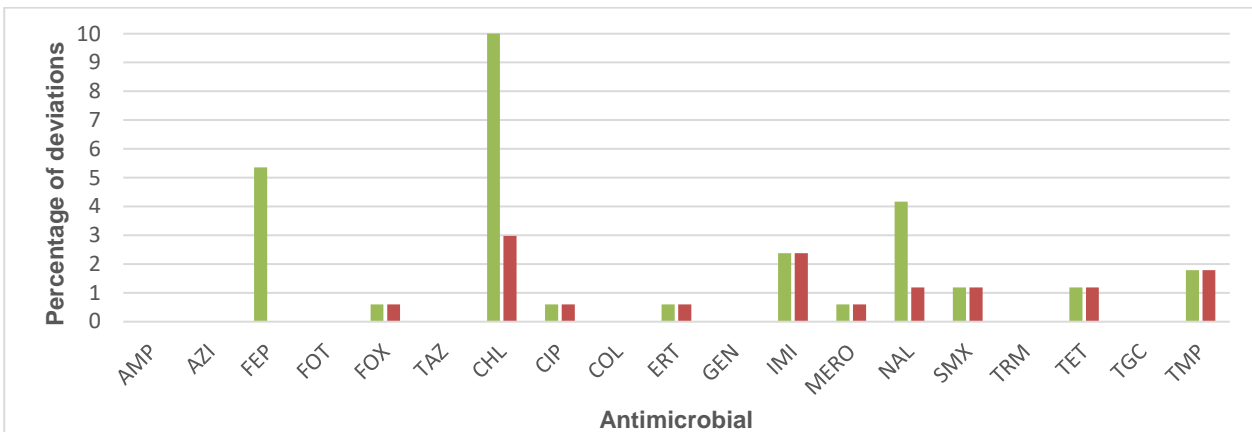


Figure 3. Percentages of total (green) and unacceptable (red) deviations per antimicrobial in EQAS matrix 2018 (AST results).

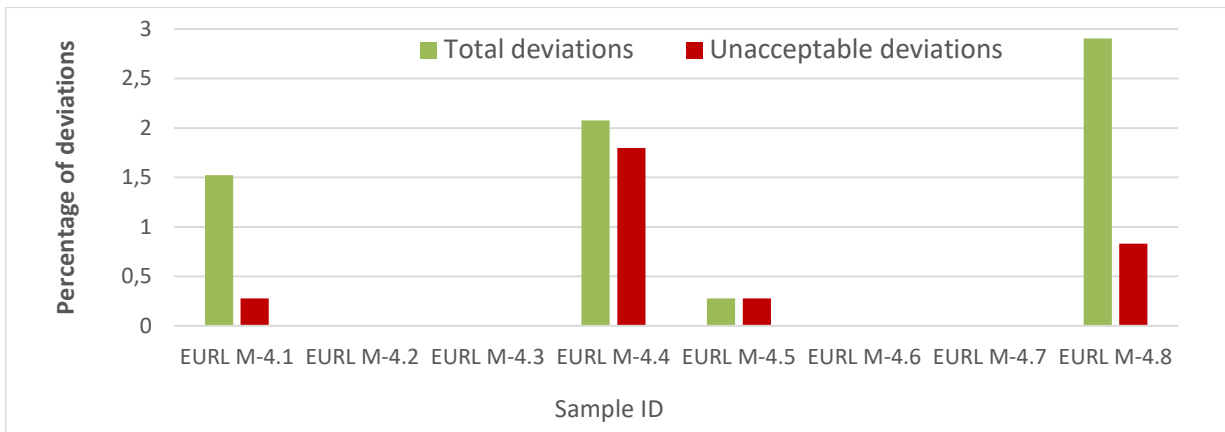


Figure 4. Percentages of total (green) and unacceptable (red) deviations per sample in EQAS matrix 2018 (AST results).

The analysis of deviations per matrix sample indicates that the highest level of unacceptable deviations (13 deviations; 1.8 %) was observed for sample M-4.4. All other samples had deviation levels below 1 % (Figure 4).

3.5 ESBL/AmpC phenotypic testing conclusions

Five chicken meat samples (M-4.1 – M-4.5) were included in this matrix EQAS. The sample M-4.1 contained an isolate expressing AmpC phenotype by mutations in the AmpC promoter region; sample M-4.2 contained a VIM-1 isolate, expressing carbapenemase, whereas M-4.4 and M-4.5 contained ESBL *E. coli* mediated by TEM-52 and SHV-12, respectively. The last sample, M-4.3, was spiked with a susceptible ATCC strain of *E. coli*. Two of the three chicken caecal samples were spiked with *E. coli*, whereas the sample M-4.6 was left as blank. M-4.7 contained an ESBL, mediated by CTX-M-1 and M-4.8 contained an isolate expressing carbapenemase by KPC-2.

One laboratory (#21) interpreted sample M-4.1 as ‘other phenotype’ and not the expected presumptive AmpC, despite they had no MIC deviations. Three labs (#20, #21, #59) isolated presumptive ESBL isolates from the meat sample M-4.3, despite this was only spiked with a susceptible ATCC *E. coli* strain, and the ESBL isolates are thereby regarded as natural contaminants and will not count as deviations. One lab (#17) reported the ESBL positive sample M-4.4 as a presumptive carbapenemase, but in this case, the AST phenotype was completely different, indicating either a mix of strains or contamination.

As for the deviations regarding carbapenemase producing isolates, the majority were correctly assigned, but two laboratories reported findings of presumptive OXA-48 isolates. One was Lab #23, which reported M-4.8 incorrectly, despite high carbapenem MICs, high FOT and TAZ MICs and low MIC for TRM. The other case was Lab #29, which reported M-4.2 incorrectly, albeit they had no MIC deviations and reported despite high carbapenem MICs, high FOT and TAZ MICs. Thus, this strain has an elevated TRM MIC, which might cause the confusion.



4. Discussion

4.1 ESBL and AmpC and carbapenemase-producing *E. coli* isolation and identification

The 2018 EURL-AR matrix EQAS trial was the fourth of its kind on samples of animal origin and thereby there have been two rounds of both chicken meat and caecal samples and two rounds of pig/cattle meat and caecal since the first round of this EQAS in 2015. Some challenges continue to be present; e.g. selection of test strains with abilities to survive in caecal samples, and adequate testing and selection of meat and caecal samples with a low level of background bacteria and absence of ESBL contamination. In this round, we experienced that one test strain (M-4.8) was unable to survive in some of the caecal samples. Furthermore, it was specifically problematic for the meat samples; initially it was difficult to obtain meat without ESBL contamination and despite the thorough pre-testing, some meat samples ended out with natural ESBL contamination. As the screening only serves to reveal possible ESBL/AmpC contamination per batch and a rough estimation of the level of background bacteria, it is practically impossible to avoid having generic *Enterobacteriaceae* or *E. coli* and sometimes even ESBL bacteria in some parts of the meat matrix.

This is a great limitation for the matrix EQAS, compared to other EQAS' on pure isolates. In this round, we further had problems with the shipping, resulting in two labs experiencing severe delays in the shipment of samples. One lab (Iceland) received a new set of samples, whereas the other lab (Switzerland) chose not to participate due to the delay. In general, the ESBL/AmpC isolation was successful, and disregarding the samples of M-4.8 that did not survive well in caecal matrix, only four isolates were not detected; two from meat and two from

caecal samples, each deviation in a different laboratory.

4.2 Antimicrobial susceptibility testing

It is in general a problem, when the expected MIC values are close to the breakpoint between susceptible and resistant. Although one MIC level deviation is generally accepted, it is problematic when it changes the susceptible/resistant interpretation. Thus, it can be difficult to select test strains with clear phenotypes, expected to survive in the matrix, without making compromises on this point. This issue gave rise to the majority of AST deviations, wherefore the deviations have been parted into total deviations and unacceptable deviations in the results parts of this report.

The remaining results, however, were generally very precise, with the exception of one problematic strain in one lab, but there were more widespread deviations in the AST results in 2018 than in previous years. This year, nine laboratories had no deviations at all and 21 laboratories had no 'unacceptable deviations' compared to in 2017, where twenty-seven labs had no deviations in the evaluated AST results. Thus, it is still an improvement compared to only seven labs with no deviations in 2016. Thus, the challenges met were not unexpected, as working with isolates in a matrix is not unlikely to cause problems like retrieving the right isolates from the samples, or that changes could have occurred in the isolate composition in the samples or the isolate characteristics (conjugation, or plasmid losses). Some of the deviating results were further caused by MIC results close to breakpoint, and this should carefully be considered when selecting the strains for spiking samples. Thus, some of the deviations seem to derive from either mix of samples or by wrong interpretation of a correct MIC.



4.3 ESBL /AmpC phenotypic testing conclusions

As what regards to the final conclusions for the AST testing and phenotypic confirmation, the conclusions depends heavily on the isolation process, thus some of the deviations might be related to the isolation of strains that have different characteristics. Thus, the primary AST results, used for classification of ESBL, AmpC,

carbapenemases or other phenotypes were generally very good. There were two cases of confusion about the interpretation of OXA-48 phenotype, and this could be clarified in the protocol of the EQAS for next year. Eight laboratories reported that they did not perform the optional carbapenemase selective isolation, which is an increase from five labs in 2017.

5. Conclusion

In general, the results of this matrix EQAS demonstrate that most participating labs have well established methods to isolate ESBL and AmpC-carrying strains from meat or caecal samples, despite the difficult nature of the matrices.

The susceptibility testing results were in general very satisfactory, with only few deviations. Thus, there are still some preventable deviations, including mix of strains and wrong interpretation of susceptible or resistant phenotypes.

6. References

EC 652/2013- COMMISSION IMPLEMENTING DECISION of 12 November 2013 on the

monitoring and reporting of antimicrobial resistance in zoonotic and commensal bacteria.



7. Appendices

- Appendix 1. Pre-notification EURL-AR EQAS matrix 2018
- Appendix 2. List of participants
- Appendix 3. Expected results
- Appendix 4. Protocol EQAS matrix 2018
- Appendix 5. Examples of Test forms EQAS matrix 2018
- Appendix 6. List of deviations

EURL-AR EQAS pre-notification

G00-06-001/01.12.2014

EQAS 2018 FOR SELECTIVE ISOLATION OF *E. COLI* WITH PRESUMPTIVE ESBL, AMPC PHENOTYPES OR CARBAPENEMASES FROM MEAT OR CAECAL SAMPLES

The EURL-AR announces the launch of the third EQAS on matrix samples, providing the opportunity for proficiency testing, which is considered an essential tool for the generation of reliable laboratory results of consistently good quality.

This EQAS consists of testing of eight samples for selective isolation of ESBL, AmpC or carbapenemase-presumptive *E. coli*.

This EQAS is specifically for NRL's on antimicrobial resistance involved in the monitoring according to the EU Commission legislation 652/2013 and specifically processing meat and caecal samples in the specific monitoring for ESBL implemented in 2015. The laboratories designated to be NRL-AR will be contacted to confirm the addresses for the shipment of these samples. Participation is free of charge for all above-mentioned designated laboratories.

TO AVOID DELAY IN SHIPPING THE ISOLATES TO YOUR LABORATORY

The content of the parcel is categorized as "UN3373, Biological Substance Category B". Eight samples which might contain ESBL, AmpC or carbapenemase-producing *E. coli* included in a matrix of chicken meat and/or caecal will be shipped. Please provide the EQAS coordinator with documents or other information that can simplify customs procedures. We kindly ask you to send this information already at this stage.

TIMELINE FOR RESULTS TO BE RETURNED TO THE NATIONAL FOOD INSTITUTE

Shipment of isolates and protocol: The isolates are expected to be shipped in the **first week of October**. The protocol for this proficiency test is available for download from the website (<https://www.eurl-ar.eu/protocols.aspx>).

Submission of results: Results must be submitted to the National Food Institute **no later than December 7th, 2018** via a password-protected website. Upon reaching the deadline, each participating laboratory is kindly asked to enter the password-protected website once again to download an automatically generated evaluation report.

EQAS report: A report summarising and comparing results from all participants will be issued. In the report, laboratories will be presented coded, which ensures full anonymity. The EURL-AR and the EU Commission, only, will have access to un-coded results. The report will be publicly available.

Next EQAS: The next EURL-AR EQAS that we will have is on antimicrobial susceptibility testing of *Salmonella*, *Campylobacter* and optional genotypic characterisation which will be carried out mid-October, 2018.

Please contact me if you have comments or questions regarding the EQAS.

Sincerely,

Jette Kjeldgaard, EURL-AR EQAS-Coordinator

Meat	Caecal	Institute	Country
x	x	Austrian Agency for Health and Food Safety	Austria
x	x	Institute of Public Health	Belgium
x	x	National Diagnostic and Research Veterinary Institute	Bulgaria
x	x	Croatian Veterinary Institut	Croatia
x	x	Veterinary Services	Cyprus
x	x	State Veterinary Institute Praha	Czech Republic
x	x	Danish Veterinary and Food Administration	Denmark
x	x	Estonian Veterinary and Food Laboratory	Estonia
x	x	Finnish Food Safety Authority EVIRA	Finland
x	x	Agence nationale de sécurité sanitaire alimentation, environnement, travail	France
x	x	Federal Institute for Risk Assessment	Germany
x	x	Veterinary Laboratory of Chalkida	Greece
x	x	Central Agricultural Office Veterinary Diagnostic Directorate	Hungary
x	x	Institute For Experimental Pathology, University of Iceland, KELDUR	Iceland
x	x	Central Veterinary Research Laboratory	Ireland
x	x	Istituto Zooprofilattico Sperimentale delle Regioni Lazio e Toscana	Italy
x	x	Institute of Food Safety, Animal Health and Environment BIOR	Latvia
x	x	National Food and Veterinary Risk Assessment Institute	Lithuania
x	x	Laboratoire de Medecine Vétérinaire	Luxembourg
x	x	Public Health Laboratory	Malta
x	x	Wageningen Bioveterinary Research (WBVR)	Netherlands
x	x	The Netherlands Food and Consumer Product Safety Authority*	Netherlands
x	x	Veterinærinstituttet	Norway
x	x	National Veterinary Research Institute	Poland
x	x	Instituto Nacional de Investigação Agrária e Veterinária	Portugal
	x	Institute for Diagnosis and Animal Health	Romania
x		Institute for Hygiene and Veterinary Public Health	Romania
x	x	State Veterinary and Food Institute (SVFI)	Slovakia
x	x	National Veterinary Institute	Slovenia
	x	Laboratorio Central de Veterinaria	Spain
x		Centro Nacional de Alimentación (AECOSAN)	Spain
x	x	Foodborne Zoonoses and Antimicrobial Resistance Unit (ZTA)*	Spain
x	x	National Veterinary Institute, SVA	Sweden
	x	Agri-Food and Biosciences Institute*	United Kingdom
x	x	Animal Plant Health Agency	United Kingdom

Designated NRL-AR by the competent authority of the member state

Non-NRL-AR enrolled by the EURL-AR

Not a Member State of the EU

* Submitted results were not included in the current report (one dataset per country, only)

Panel 1

Strain	AMP	AZI	FOT	TAZ	CHL	CIP	COL	GEN	MERO	NAL	SMX	TET	TGC	TMP
EURL-M-4.1	>64	>64	2	8	16	0.03	<=1	<=0.5	<=0.03	8	>1024	4	0.5	>32
EURL-M-4.2	>64	4	>4	>8	<=8	0.03	<=1	2	8	<=4	16	<=2	<=0.25	<=0.25
EURL-M-4.3	ND	ND	ND	ND	ND	ND	ND	ND	ND	ND	ND	ND	ND	ND
EURL-M-4.4	>64	8	>4	4	32	<=0,015	<=1	1	<=0,03	<=4	>1024	<=2	<=0.25	0.5
EURL-M-4.5	>64	4	4	>8	32	<=0.015	<=1	<=0.5	<=0.03	<=4	>1024	64	0.5	<=0.25
EURL-M-4.6	ND	ND	ND	ND	ND	ND	ND	ND	ND	ND	ND	ND	ND	ND
EURL-M-4.7	>64	16	>4	4	<=8	<=0.015	<=1	1	<=0.03	<=4	<=8	<=2	<=0.25	<=0.25
EURL-M-4.8	>64	8	>4	4	32	1	<=1	1	4	32	>1024	>64	0.5	>32

Interpretation

Strain	AMP	AZI	FOT	TAZ	CHL	CIP	COL	GEN	MERO	NAL	SMX	TET	TGC	TMP
EURL-M-4.1	R	R	R	R	S	S	S	S	S	S	R	S	S	R
EURL-M-4.2	R	S	R	R	S	S	S	S	R	S	S	S	S	S
EURL-M-4.3	ND	ND	ND	ND	ND	ND	ND	ND	ND	ND	ND	ND	ND	ND
EURL-M-4.4	R	S	R	R	R	S	S	S	S	S	R	S	S	S
EURL-M-4.5	R	S	R	R	R	S	S	S	S	S	R	R	S	S
EURL-M-4.6	ND	ND	ND	ND	ND	ND	ND	ND	ND	ND	ND	ND	ND	ND
EURL-M-4.7	R	S	R	R	S	S	S	S	S	S	S	S	S	S
EURL-M-4.8	R	S	R	R	R	R	S	S	R	R	R	R	S	R

Panel 2

Code	FEP	FOT+CL	FOT	FOX	TAZ	TAZ+CL	ETP	IMI	MERO	TRM	Gene
EURL-M-4.1	0.25	2	2	64	8	8	0.03	<=0.12	<=0.03	8	upregulated AmpC
EURL-M-4.2	>32	>64/4	>64	64	>128	128/4	2	8	8	64	blaVIM-1
EURL-M-4.3	ND	ND	ND	ND	ND	ND	ND	ND	ND	ND	
EURL-M-4.4	1	<=0.06	4	4	8	<=0.12	<=0.015	0.25	<=0,03	8	TEM-52
EURL-M-4.5	0.5	<=0.06/4	4	2	16	<=0.12/4	<=0.015	<=0.12	<=0.03	4	blaSHV-12
EURL-M-4.6	ND	ND	ND	ND	ND	ND	ND	ND	ND	ND	
EURL-M-4.7	32	<=0.06	>64	4	4	<=0.12	<=0.015	<=0.12	<=0.03	4	blaCTX-M-1
EURL-M-4.8	4	2	4	32	8	2	2	2	2	16	blaKPC-2

Interpretation

Code	FEP	FOT+CL	FOT	FOX	TAZ	T/C	ETP	IMI	MERO	TRM	ESBL conclusion
EURL-M-4.1	R	NO SYNERGY	R	R	R	NO SYNERGY	S	S	S	NA	Presumptive AmpC
EURL-M-4.2	R	NO SYNERGY	R	R	R	NO SYNERGY	R	R	R	NA	Presump. carbap.
EURL-M-4.3	ND	ND	ND	ND	ND	ND	ND	ND	ND	ND	Susceptible
EURL-M-4.4	R	SYNERGY	R	S	R	SYNERGY	S	S	S	NA	Presumptive ESBL
EURL-M-4.5	R	SYNERGY	R	S	R	SYNERGY	S	S	S	NA	Presumptive ESBL
EURL-M-4.6	ND	ND	ND	ND	ND	ND	ND	ND	ND	ND	Blank
EURL-M-4.7	R	SYNERGY	R	S	R	SYNERGY	S	S	S	NA	Presumptive ESBL
EURL-M-4.8	R	NO SYNERGY	R	R	R	NO SYNERGY	R	R	R	NA	Presump. carbap.



PROTOCOL

for selective isolation of presumptive ESBL-, AmpC- and carbapenemase-producing *Escherichia coli* from meat and caecal samples (Matrix EQAS)

Table of contents

1	INTRODUCTION.....	1
2	OBJECTIVES	2
3	OUTLINE OF THE EQAS	2
3.1	Shipping, receipt and storage of samples.....	2
3.2	Selective isolation of ESBL, AmpC or carbapenemase producing <i>E. coli</i> from the samples	3
3.3	Antimicrobial susceptibility testing.....	4
4	REPORTING OF RESULTS AND EVALUATION.....	6
4.1	General recommendations for data upload	6
5	HOW TO ENTER RESULTS IN THE INTERACTIVE DATABASE.....	7
5.1	Sample reception/testing.....	7
5.2	Selective enrichment methods.....	7
5.3	Test results	7
5.4	Finalizing data input, EQAS evaluation and approval of result upload.....	8
	APPENDIX.....	9

1 INTRODUCTION

The organisation and implementation of an External Quality Assurance System (EQAS) on selective isolation of presumptive extended spectrum beta-lactamase (ESBL)-, AmpC- or carbapenemase-producing *E. coli* is among the tasks of the EU Reference Laboratory for Antimicrobial Resistance (EURL-AR), and will include the selective isolation procedures and



antimicrobial susceptibility testing (AST) of obtained isolates of eight samples of either meat or caecal content. In 2018, these eight samples will include five 25-g samples of chicken meat and three 1-g samples of chicken caecal content. These samples may contain *E. coli* presumptive of producing either ESBL-, AmpC- or carbapenemase-enzymes.

It is expected that the participating laboratories apply the same analysis procedures used in the monitoring, described by the regulation EC/652/2013, and perform the selective isolation following the by EU recommended methods, published on the EURL-AR website www.eurl-ar.eu.

2 OBJECTIVES

This EQAS aims to assess and, if necessary, to improve the quality of results obtained in the selective isolation of presumptive ESBL-, AmpC- or carbapenemase-producing isolates from meat and caecal samples. Further objectives are to evaluate and improve the comparability of surveillance data on ESBL-, AmpC- or carbapenemase -producing *E. coli* reported to EFSA by different laboratories.

3 OUTLINE OF THE EQAS

3.1 Shipping, receipt and storage of samples

In October 2018, the National Reference Laboratories for Antimicrobial Resistance (NRL-AR) will receive a parcel containing eight samples from the National Food Institute. All strains used in the spiking of samples belong to UN3373, Biological substance, category B. Participants should expect that ESBL-, AmpC- and/or carbapenemase-enzymes producing strains will be included in some of the sample matrices.

The samples will be spiked matrices of either beef meat or pig caecal content and will be distributed already weighed and ready to be tested, in tubes labelled from 4.1 to 4.8. Hereof 4.1 to 4.5 being samples of meat (each 25 g) and 4.6 to 4.8 being samples of caecal content (each 1 g).

The matrix samples will be shipped on October 1st in frozen state in separate tubes and contained in a cooling box with a temperature logging devices and cooling elements.

Upon arrival, it is very important to open the parcel as soon as possible and proceed to the analysis (following the normal procedures for sample testing in the monitoring).

It is required that participants

- **when opening the parcel, note the date and exact time at opening (this data is very important to follow the temperature data checks)**
- **proceed to sample analysis immediately after opening the parcel**
- **register the date for start of analysis for each sample**
- **collect the temperature logging device (small discoid device located in a bag inserted in a labelled tube, located inside the parcel); open the tube and take out the bag with the**



device inside. Place this bag with the device in the labelled bubble envelope provided and return it to the EURL-AR as soon as possible. Please note that you will have to arrange for stamps/postage (the post systems differ from country to country, why this cannot be arranged and paid from the EURL-AR in advance).

3.2 Selective isolation of ESBL, AmpC or carbapenemase producing *E. coli* from the samples

The samples provided in each parcel are weighed beforehand and therefore no further weighing is required. Proceed immediately to the first enrichment step by adding the sample to the necessary volume of media (225 ml of Buffered Peptone water for the meat samples and 9 ml for the caecal samples) as referred in the official EURL-AR protocols. All the following procedures should follow the methods used in the monitoring for ESBL and AmpC *E. coli* according to the EC/652/2013 regulation. If any changes are introduced to the official protocols, these changes should be described with details in the online database on the methods upload page. The participants are responsible for assuring the validity of the plates and therefore the protocol for “Validation of selective MacConkey agar plates supplemented with 1 mg/L cefotaxime for monitoring of ESBL and AmpC producing *E. coli* in meat and animals” should be run beforehand, as stated on the EURL-AR webpage (see <http://eurl-ar.eu/233-protocols.htm>).

Optionally, the participants may perform the additional plating for isolation of carbapenemase-producing *E. coli* from the samples, following the official protocols and plating on suitable agar plates. Similarly, the agar plates used for the carbapenemase isolation should be validated using the protocol for “Validation of selective and indicative agar plates for monitoring of carbapenemase-producing *E. coli*”.

The officially recommended protocols are found on the EURL-AR webpage (<http://eurl-ar.eu/233-protocols.htm>):

- Follow the protocol for meat when testing samples 4.1 to 4.5
- Follow the protocol for caecal content when testing samples 4.6 to 4.8

As referred in these protocols, the isolates obtained from isolation procedure should be identified as *E. coli* using the procedures for *E. coli* species identification applied at the participant’s laboratory for the specific monitoring of ESBL- and AmpC-producing *E. coli*.

Please store the isolates obtained in the isolation procedure and document the whole process as well as all the findings in each step.

As part of the results submission, you will be requested to describe the findings along the enrichment process and selective isolation including growth in the media, isolation of suspected colonies, species identification results and finally regarding the finding (or not) of presumptive *E. coli* isolates harbouring one of the selected resistances (this result will be evaluated in relation to the expected result as a qualitative result) (see details in the Test Form).



3.3 Antimicrobial susceptibility testing

If the sample is deemed positive for ESBL-, AmpC- or carbapenemase -producing *E. coli*, one *E. coli* isolate per sample should be taken further and tested for susceptibility to antimicrobials as stated in the EU regulation (antimicrobials listed in Tables 1 and 2 in this document).

Only one *E. coli* isolate is expected to be tested for AST and these results will be evaluated in the database comparing to expected results.

AST results to be reported should be from:

- A presumptive carbapenemase positive isolate (from the CARBA or OXA-48 selective plates), if this optional part was performed and a presumptive carbapenemase positive *E. coli* isolate was detected.
- An ESBL- or AmpC-presumptive isolate (if you do not have a carbapenemase positive isolate or if you did not perform the optional plating) if an ESBL- or AmpC-presumptive isolate was detected.

The testing should be performed using the same method as implemented in your laboratory for performing AST when monitoring for EFSA according to the regulation EC/652/2013 (using the two-step approach, i.e. both testing panels) and applying the interpretative criteria listed below.

Table 1. Antimicrobials recommended for AST of *Escherichia coli* and interpretative criteria according to table 1 in Commission Implementing Decision 2013/652/EU

Antimicrobials for <i>E. coli</i>	MIC (mg/L) R is >
Ampicillin, AMP	8
Azithromycin, AZI	16*
Cefotaxime, FOT	0.25
Ceftazidime, TAZ	0.5
Chloramphenicol, CHL	16
Ciprofloxacin, CIP	0.064
Colistin, COL	2
Gentamicin, GEN	2
Meropenem, MERO	0.125
Nalidixic acid, NAL	16
Sulfamethoxazole, SMX	64
Tetracycline, TET	8
Tigecycline, TGC	0.5**
Trimethoprim, TMP	2

* Tentative ECOFF

** EUCAST.org



Plasmid-mediated quinolone resistance

When performing AST of *E. coli*, the interpretative criteria listed in Table 1 for results obtained by MIC-determination should allow detection of plasmid-mediated quinolone-resistant test strains.

Beta-lactam resistance

Confirmatory testing for ESBL production is mandatory on all strains resistant to cefotaxime (FOT), ceftazidime (TAZ) and/or meropenem (MERO) and should be performed by testing the second panel of antimicrobials (Table 2).

Table 2. Antimicrobials recommended for additional AST of *Escherichia coli* resistant to cefotaxime, ceftazidime or meropenem and interpretative criteria according to Table 4 in Commission Implementing Decision 2013/652/EU.

Antimicrobials for <i>E. coli</i>	MIC (mg/L) R is >
Cefepime, FEP	0.125
Cefotaxime, FOT	0.25
Cefotaxime + clavulanic acid (F/C)	Not applicable
Cefoxitin, FOX	8
Ceftazidime, TAZ	0.5
Ceftazidime+ clavulanic acid (T/C)	Not applicable
Ertapenem, ETP	0.06
Imipenem, IMI	0.5
Meropenem, MERO	0.125
Temocillin, TRM	>32*

*Tentative ECOFF

Confirmatory test for ESBL production requires use of both cefotaxime (FOT) and ceftazidime (TAZ) alone and in combination with a β -lactamase inhibitor (clavulanic acid). Synergy is defined either as i) a ≥ 3 twofold concentration decrease in an MIC for either antimicrobial agent tested in combination with clavulanic acid vs. the MIC of the agent when tested alone (MIC FOT : FOT/CL or TAZ : TAZ/CL ratio ≥ 8) (CLSI M100 Table 3A, Tests for ESBLs). The presence of synergy indicates ESBL production.

Confirmatory test for carbapenemase production requires the testing of meropenem (MERO).

Detection of AmpC-type beta-lactamases can be performed by testing the bacterium for susceptibility to cefoxitin (FOX). Resistance to FOX could indicate the presence of an AmpC-type beta-lactamase.

The classification of the phenotypic results should be based on the most recent EFSA recommendations (EURL-AR Workshop 2016; <https://www.eurl->



ar.eu/CustomerData/Files/Folders/3-workshop-kgs-lyngby-april2016/25_efs-eusr-amr-workflow-and-criteria-for-esbl-ampc-carbapenemase-phenotypes.pdf and in the appendix to this protocol).

4 REPORTING OF RESULTS AND EVALUATION

Please write your results in the test forms, and enter your results into the interactive web database.

4.1 General recommendations for data upload

We recommend reading carefully the description reported in paragraph 5 before entering your results in the web database. **Results must be submitted no later than 7th, December, 2018.** After the deadline when all participants have uploaded results, you will be able to login to the database once again, and to view and print an automatically generated report evaluating your results. Results in agreement with the expected interpretation are categorised as ‘correct’, while results deviating from the expected interpretation are categorised as ‘incorrect’.

If you experience difficulties in entering your results, please contact us directly.

All results will be summarized in a report which will be publicly available. The data in the report will be presented with laboratory codes. A laboratory code is known to the individual laboratory, whereas the complete list of laboratories and their codes is confidential and known only to the EURL-AR and the EU Commission. All conclusions will be public.

If you have questions, please do not hesitate to contact the EQAS Coordinator:

Jette Sejer Kjeldgaard
National Food Institute
Technical University of Denmark
Kemitorvet, Building 204,
DK-2800 Lyngby
Denmark
Tel: +45 3588 6269
E-mail: jetk@food.dtu.dk



5 HOW TO ENTER RESULTS IN THE INTERACTIVE DATABASE

Please read carefully this paragraph before entering the web page.
Remember that you need by your side the completed test forms.

Enter the EURL-AR EQAS 2018 start web page (<http://eurl.food.dtu.dk/matrix>), write your username and password in lower-cases and press enter. Your username and password are indicated in the Welcome letter following the samples. Do not hesitate to contact us if you experience problems with the login.

You can browse back and forth by using the Home or back keys, but please remember to save your inputs before.

5.1 Sample reception/testing

Please fill in with information in relation to date and time (please note the exact time) and temperature at arrival of the parcel contents as measured by you (we will also check on the thermologgers data after you send back the device).

5.2 Selective enrichment methods

Please fill in with the details of the methods use and insert any changes made to the official method

5.3 Test results

5.3.1 Selective enrichment of presumptive ESBL-, AmpC- or carbapenemase -producing *E. coli*

Fill in the answers for the questions regarding the selective enrichment results along the process

5.3.2 Species identification enrichment of presumptive ESBL- or AmpC-producing *E. coli*

Please confirm the results and conclude if you found an *E. coli* presumptive of producing an ESBL or AmpC gene in the sample (this conclusion will be evaluated).

Please confirm the results and conclude also if you found an *E. coli* presumptive of producing a carbapenemase or OXA-type enzyme in the sample (these conclusions will be evaluated separately).

If you respond to the above questions indicating that you did not find a presumptive isolate to go further you are not expected to fill in the remaining questions.

If your answer is 'yes' for both or one of the above, you are expected to fill in the MIC tables and final conclusion of the AST and confirmatory testing.



5.3.3 AST of *E. coli*

Based on the first MIC panel results, indicate if the isolate fulfils the criteria to be tested on the second panel (confirmatory phenotypic testing) or not, and fill in the results for the second panel in case you decide to do the confirmatory testing.

Complete the fields in the result tables related to the results obtained.

Click on “save” and then go back using the tab “home” and enter another test page to upload results

In the data entry pages, enter the obtained values and the interpretation (R, resistant or S, susceptible) for each *E. coli* isolate.

Remember to report also the conclusion of the phenotypic testing on the second panel (will be evaluated separately).

If you did not test for susceptibility to a given antimicrobial, please leave the field empty.

Click on “save“ and then go back using the tab “home” and enter another test page to upload results.

Click on “save“.

5.4 Finalizing data input, EQAS evaluation and approval of result upload

Review the input pages by browsing through the pages and make corrections if necessary.

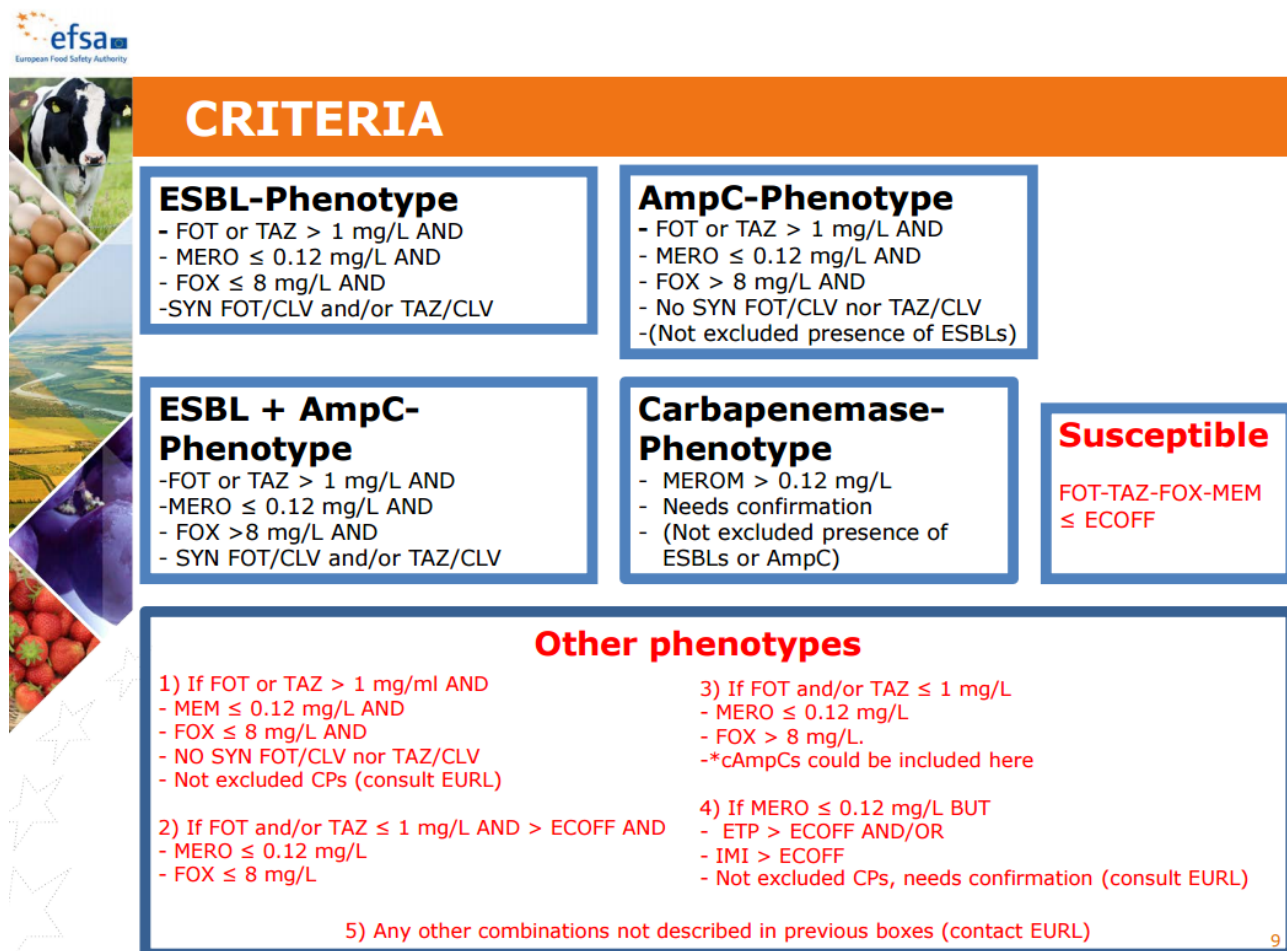
Remember to save a page if you make corrections. If you press home a page without saving changes, you will see an error screen. In this case, click on “save“ to save your results, browse back to the page and then continue.

Please complete the evaluation form for the EQAS when you finalize the data input. You can find the tab on the Home page, on the tab “Evaluation”

Before approving your input, please be sure that you have filled in all the relevant fields for the sample sheet, the methods and the test results for all samples tested because **YOU CAN ONLY APPROVE ONCE!** The approval blocks your data entry in the interactive database.

APPENDIX

Criteria for interpretation of *Escherichia coli*, panel 2 results



efsa
European Food Safety Authority

CRITERIA

ESBL-Phenotype

- FOT or TAZ > 1 mg/L AND
- MERO ≤ 0.12 mg/L AND
- FOX ≤ 8 mg/L AND
- SYN FOT/CLV and/or TAZ/CLV

AmpC-Phenotype

- FOT or TAZ > 1 mg/L AND
- MERO ≤ 0.12 mg/L AND
- FOX > 8 mg/L AND
- No SYN FOT/CLV nor TAZ/CLV
- (Not excluded presence of ESBLs)

ESBL + AmpC-Phenotype

- FOT or TAZ > 1 mg/L AND
- MERO ≤ 0.12 mg/L AND
- FOX > 8 mg/L AND
- SYN FOT/CLV and/or TAZ/CLV

Carbapenemase-Phenotype

- MEROM > 0.12 mg/L
- Needs confirmation
- (Not excluded presence of ESBLs or AmpC)

Susceptible

FOT-TAZ-FOX-MEM ≤ ECOFF

Other phenotypes

1) If FOT or TAZ > 1 mg/ml AND

- MEM ≤ 0.12 mg/L AND
- FOX ≤ 8 mg/L AND
- NO SYN FOT/CLV nor TAZ/CLV
- Not excluded CPs (consult EURL)

3) If FOT and/or TAZ ≤ 1 mg/L

- MERO ≤ 0.12 mg/L
- FOX > 8 mg/L.
- *cAmpCs could be included here

2) If FOT and/or TAZ ≤ 1 mg/L AND > ECOFF AND

- MERO ≤ 0.12 mg/L
- FOX ≤ 8 mg/L

4) If MERO ≤ 0.12 mg/L BUT

- ETP > ECOFF AND/OR
- IMI > ECOFF
- Not excluded CPs, needs confirmation (consult EURL)

5) Any other combinations not described in previous boxes (contact EURL)

9

Please refer to the presentation at https://www.eurl-ar.eu/CustomData/Files/Folders/3-workshop-kgs-lyngby-april2016/25_efsa-eusr-amr-workflow-and-criteria-for-esbl-ampc-carbapenemase-phenotypes.pdf.



Test forms, Isolation of ESBL/AmpC- and carbapenemase-producers from matrices

Username:
Contact person:

Country:
Date for filling in test forms:

SAMPLES

Reception date and exact time of opening the parcel of the proficiency test samples at the laboratory: (date and time is required)

Temperature of the contents of the parcel at arrival: °C

How many samples did your laboratory process in 2018 for monitoring of ESBL/AmpC-detection in relation to 2013/652/EU? (choose only one option)

- less than 100
- 101-200
- 201-300
- 301-400
- 401- 1000
- more than 1000

Which kind of samples did your laboratory process in 2018 for monitoring of ESBL/AmpC-detection in relation to 2013/652/EU? (you may choose more than one option)

- caecal, chicken
- meat, chicken
- other matrices, please specify:



**EU Reference Laboratory for Antimicrobial Resistance
Isolation of ESBL/AmpC- and carbapenemase-producers
External Quality Assurance System (Matrix EQAS) 2018**

Did you process samples for carbapenemase-selective isolation?

- Yes
 No

How many samples did your laboratory process in 2018 for monitoring of carbapenemases in relation to 2013/652/EU? (Choose only one option)

- less than 100
 101-200
 201-300
 301-400
 401- 1000
 more than 1000

Which kind of samples did your laboratory process in 2018 for monitoring of carbapenemase-production in relation to 2013/652/EU? (you may choose more than one option)

- caecal, chicken
 meat, chicken
 other matrices, please specify:

Any other comments:



METHODS

1- Method used for selective isolation of ESBL/AmpC in this EQAS:

Selective isolation procedure using the EURL recommended protocols that refer to the EU regulation 652/2013/EU

- The protocol was used without modifications (please jump to question 2)
- The protocol was used, however, the pre-enrichment was modified (please respond question 1.1)
- The protocol was used, however, the selective isolation procedures were modified (please respond question 1.2)
- The protocol was used, however, the incubation conditions in the selective plating were modified (please respond question 1.3)

1.1- If you modified the pre-enrichment, please indicate the differences introduced:

Different sample amount (weight) used for the enrichment procedure:

g in meat samples

g for caecal samples

Different volume of enrichment in the isolation step:

ml for meat samples

ml for caecal samples

Different pre-enrichment medium:

Different incubation conditions in pre-enrichment °C/ h;

Please justify these changes:

1.2- If you made changes in the selective isolation procedure:

Different sample amount (weight) used for the enrichment procedure:

g in meat samples

g for caecal samples

Different concentration of cefotaxime: mg/L

Different antimicrobial

Different medium

Please justify these changes:



**EU Reference Laboratory for Antimicrobial Resistance
Isolation of ESBL/AmpC- and carbapenemase-producers
External Quality Assurance System (Matrix EQAS) 2018**

1.3- If you used different incubation conditions in the selective plating, please indicate the conditions used: °C/ h;

Please justify these changes:

2- Method used for selective isolation of carbapenemase-producers (in case you run this method) in this EQAS:

Selective isolation procedure using the EURL recommended protocols for isolation of carbapenemase-producers:

- We did not perform carbapenemase selective isolation
- The protocol was used without modifications
- The protocol was modified

Plates used (brand/type)

Please justify these changes:

3- Method used for confirmation of *E. coli* species identification. Please indicate the primary *E. coli* identification method used (choose only one option; if you used more than one method, please explain in the comments field)

- PCR using published methods
- PCR using in-house method
- Biochemical tests
- MALDI-ToF
- DNA Sequencing
- Chromogenic media

Comments:

4- Method used for general antimicrobial susceptibility testing of the strains (choose only one option)

- Microbroth dilution test on EUVSEC panel
- Microbroth dilution test on another panel
- Agar dilution method
- E-test
- Disk diffusion test

5- Method used for phenotypic confirmatory testing of ESBL/AmpC (choose only one option)



**EU Reference Laboratory for Antimicrobial Resistance
Isolation of ESBL/AmpC- and carbapenemase-producers
External Quality Assurance System (Matrix EQAS) 2018**

- Microbroth dilution test on EUVSEC2 panel
- Microbroth dilution test on another panel
- Agar dilution method
- E-test
- Disk diffusion test

6- Additional comments. Please include here description and justification of your choice if you modified something in relation to the method defined in the EU regulation 2013/652/EU:



TEST FORM – SAMPLE ‘EURL M-4.1’

Date the isolation procedure was started:

Please describe the results you have observed regarding this sample:

Visible growth in pre-enrichment:

Yes / No

Growth on ESBL/AmpC-selective plates:

Yes / No

Please describe the growth observed on ESBL/AmpC-selective plates? (choose only one option)

- Mixed culture containing typical *E. coli* colonies
- Mixed culture without typical *E. coli* colonies
- Pure culture of typical *E. coli* colonies
- Pure culture without typical *E. coli* colonies
- No growth

Results of species identification: (choose only one option)

- No isolates tested (sample negative)
- Presumptive ESBL/AmpC isolate identified as *E. coli* (sample considered positive)

Comments:

Did you perform carbapenemase selective plating?

Yes / No

Growth on CARBA-selective plates:

Yes / No

Growth on OXA-48 selective plates:

Yes / No

Results of species identification (isolates from carbapenemase selective plating): (choose only one option)

- No isolates tested (sample negative)
- Presumptive other carbapenemase isolate identified as *E. coli* (sample considered positive)
- Presumptive OXA-48 isolate identified as *E. coli* (sample considered positive)

Comments:

If you have found a presumptive carbapenemase positive isolate, please insert the results of antimicrobial susceptibility testing for the selected *E. coli* isolate, if you do not have a carbapenemase positive isolate and you have an ESBL presumptive isolate, please insert the results for this isolate (only one *E. coli* isolate is expected to be tested and these results will be evaluated in our database against the expected results).

Please confirm where the isolate tested for antimicrobial susceptibility originated from (compulsory):



**EU Reference Laboratory for Antimicrobial Resistance
Isolation of ESBL/AmpC- and carbapenemase-producers
External Quality Assurance System (Matrix EQAS) 2018**

- ESBL/ampC isolation on MacConkey with cefotaxime
- CARBA plate
- OXA-48 plate

Based on the results from the first AST panel, was the isolate found resistant to cefotaxime, ceftazidime or meropenem so that the second panel was tested?

Yes / No



**EU Reference Laboratory for Antimicrobial Resistance
Isolation of ESBL/AmpC- and carbapenemase-producers
External Quality Assurance System (Matrix EQAS) 2018**

AST results

Strain	Antimicrobial	Results and interpretation		
		≤ >	MIC-value (mg/L)	S / R
<i>E. coli</i> EURL M-4.1	Ampicillin, AMP			
	Azithromycin, AZI			
	Cefotaxime, FOT			
	Ceftazidime, TAZ			
	Chloramphenicol, CHL			
	Ciprofloxacin CIP			
	Colistin, COL			
	Gentamicin, GEN			
	Meropenem, MERO			
	Nalidixic acid, NAL			
	Sulfamethoxazole, SMX			
	Tetracycline, TET			
	Tigecycline, TGC			
Trimethoprim, TMP				

Second *E. coli* AST panel (confirmatory testing for ESBL/AmpC/carbapenemase-production)

Strain	Antimicrobial	Results and interpretation		
		≤ >	MIC-value (mg/L)	S / R
<i>E. coli</i> EURL M-4.1	Cefepime, FEP			
	Cefotaxime + clavulanic acid (F/C)			
	Cefotaxime, FOT			
	Cefoxitin, FOX			
	Ceftazidime, TAZ			
	Ceftazidime+ clavulanic acid (T/C)			
	Ertapenem, ETP			
	Imipenem, IMI			
	Meropenem, MERO			
	Temocillin, TRM			

Conclusions of confirmatory phenotypic testing: (choose only one option and please note that the final result will be evaluated by the database)

Interpretation of PANEL 2 results:

<input type="checkbox"/> Presumptive ESBL	<input type="checkbox"/> Presumptive AmpC	<input type="checkbox"/> Other phenotype
<input type="checkbox"/> Presumptive ESBL+ AmpC	<input type="checkbox"/> Presumptive carbapenemase	<input type="checkbox"/> Susceptible

Comments (include optional genotype or other results):



TEST FORM – SAMPLE ‘EURL M-4.2’

Date the isolation procedure was started:

Please describe the results you have observed regarding this sample:

Visible growth in pre-enrichment:

Yes / No

Growth on ESBL/AmpC-selective plates:

Yes / No

Please describe the growth observed on ESBL/AmpC-selective plates? (choose only one option)

- Mixed culture containing typical *E. coli* colonies
- Mixed culture without typical *E. coli* colonies
- Pure culture of typical *E. coli* colonies
- Pure culture without typical *E. coli* colonies
- No growth

Results of species identification: (choose only one option)

- No isolates tested (sample negative)
- Presumptive ESBL/AmpC isolate identified as *E. coli* (sample considered positive)

Comments:

Did you perform carbapenemase selective plating?

Yes / No

Growth on CARBA-selective plates:

Yes / No

Growth on OXA-48 selective plates:

Yes / No

Results of species identification (isolates from carbapenemase selective plating): (choose only one option)

- No isolates tested (sample negative)
- Presumptive other carbapenemase isolate identified as *E. coli* (sample considered positive)
- Presumptive OXA-48 isolate identified as *E. coli* (sample considered positive)

Comments:

If you have found a presumptive carbapenemase positive isolate, please insert the results of antimicrobial susceptibility testing for the selected *E. coli* isolate, if you do not have a carbapenemase positive isolate and you have an ESBL presumptive isolate, please insert the results for this isolate (only one *E. coli* isolate is expected to be tested and these results will be evaluated in our database against the expected results).

Please confirm where the isolate tested for antimicrobial susceptibility originated from (compulsory):



**EU Reference Laboratory for Antimicrobial Resistance
Isolation of ESBL/AmpC- and carbapenemase-producers
External Quality Assurance System (Matrix EQAS) 2018**

- ESBL/ampC isolation on MacConkey with cefotaxime
- CARBA plate
- OXA-48 plate

Based on the results from the first AST panel, was the isolate found resistant to cefotaxime, ceftazidime or meropenem so that the second panel was tested?

Yes / No



**EU Reference Laboratory for Antimicrobial Resistance
Isolation of ESBL/AmpC- and carbapenemase-producers
External Quality Assurance System (Matrix EQAS) 2018**

AST results

Strain	Antimicrobial	Results and interpretation		
		≤ >	MIC-value (mg/L)	S / R
<i>E. coli</i> EURL M-4.2	Ampicillin, AMP			
	Azithromycin, AZI			
	Cefotaxime, FOT			
	Ceftazidime, TAZ			
	Chloramphenicol, CHL			
	Ciprofloxacin CIP			
	Colistin, COL			
	Gentamicin, GEN			
	Meropenem, MERO			
	Nalidixic acid, NAL			
	Sulfamethoxazole, SMX			
	Tetracycline, TET			
	Tigecycline, TGC			
Trimethoprim, TMP				

Second *E. coli* AST panel (confirmatory testing for ESBL/AmpC/carbapenemase-production)

Strain	Antimicrobial	Results and interpretation		
		≤ >	MIC-value (mg/L)	S / R
<i>E. coli</i> EURL M-4.2	Cefepime, FEP			
	Cefotaxime + clavulanic acid (F/C)			
	Cefotaxime, FOT			
	Cefoxitin, FOX			
	Ceftazidime, TAZ			
	Ceftazidime+ clavulanic acid (T/C)			
	Ertapenem, ETP			
	Imipenem, IMI			
	Meropenem, MERO			
	Temocillin, TRM			

Conclusions of confirmatory phenotypic testing: (choose only one option and please note that the final result will be evaluated by the database)

Interpretation of PANEL 2 results:

<input type="checkbox"/> Presumptive ESBL	<input type="checkbox"/> Presumptive AmpC	<input type="checkbox"/> Other phenotype
<input type="checkbox"/> Presumptive ESBL+ AmpC	<input type="checkbox"/> Presumptive carbapenemase	<input type="checkbox"/> Susceptible

Comments (include optional genotype or other results):



TEST FORM – SAMPLE ‘EURL M-4.3

Date the isolation procedure was started:

Please describe the results you have observed regarding this sample:

Visible growth in pre-enrichment:

Yes / No

Growth on ESBL/AmpC-selective plates:

Yes / No

Please describe the growth observed on ESBL/AmpC-selective plates? (choose only one option)

- Mixed culture containing typical *E. coli* colonies
- Mixed culture without typical *E. coli* colonies
- Pure culture of typical *E. coli* colonies
- Pure culture without typical *E. coli* colonies
- No growth

Results of species identification: (choose only one option)

- No isolates tested (sample negative)
- Presumptive ESBL/AmpC isolate identified as *E. coli* (sample considered positive)

Comments:

Did you perform carbapenemase selective plating?

Yes / No

Growth on CARBA-selective plates:

Yes / No

Growth on OXA-48 selective plates:

Yes / No

Results of species identification (isolates from carbapenemase selective plating): (choose only one option)

- No isolates tested (sample negative)
- Presumptive other carbapenemase isolate identified as *E. coli* (sample considered positive)
- Presumptive OXA-48 isolate identified as *E. coli* (sample considered positive)

Comments:

If you have found a presumptive carbapenemase positive isolate, please insert the results of antimicrobial susceptibility testing for the selected *E. coli* isolate, if you do not have a carbapenemase positive isolate and you have an ESBL presumptive isolate, please insert the results for this isolate (only one *E. coli* isolate is expected to be tested and these results will be evaluated in our database against the expected results).

Please confirm where the isolate tested for antimicrobial susceptibility originated from (compulsory):



**EU Reference Laboratory for Antimicrobial Resistance
Isolation of ESBL/AmpC- and carbapenemase-producers
External Quality Assurance System (Matrix EQAS) 2018**

- ESBL/ampC isolation on MacConkey with cefotaxime
- CARBA plate
- OXA-48 plate

Based on the results from the first AST panel, was the isolate found resistant to cefotaxime, ceftazidime or meropenem so that the second panel was tested?

Yes / No



**EU Reference Laboratory for Antimicrobial Resistance
Isolation of ESBL/AmpC- and carbapenemase-producers
External Quality Assurance System (Matrix EQAS) 2018**

AST results

Strain	Antimicrobial	Results and interpretation		
		≤ >	MIC-value (mg/L)	S / R
<i>E. coli</i> EURL M-4.3	Ampicillin, AMP			
	Azithromycin, AZI			
	Cefotaxime, FOT			
	Ceftazidime, TAZ			
	Chloramphenicol, CHL			
	Ciprofloxacin CIP			
	Colistin, COL			
	Gentamicin, GEN			
	Meropenem, MERO			
	Nalidixic acid, NAL			
	Sulfamethoxazole, SMX			
	Tetracycline, TET			
	Tigecycline, TGC			
Trimethoprim, TMP				

Second *E. coli* AST panel (confirmatory testing for ESBL/AmpC/carbapenemase-production)

Strain	Antimicrobial	Results and interpretation		
		≤ >	MIC-value (mg/L)	S / R
<i>E. coli</i> EURL M-4.3	Cefepime, FEP			
	Cefotaxime + clavulanic acid (F/C)			
	Cefotaxime, FOT			
	Cefoxitin, FOX			
	Ceftazidime, TAZ			
	Ceftazidime+ clavulanic acid (T/C)			
	Ertapenem, ETP			
	Imipenem, IMI			
	Meropenem, MERO			
Temocillin, TRM				

Conclusions of confirmatory phenotypic testing: (choose only one option and please note that the final result will be evaluated by the database)

Interpretation of PANEL 2 results:

<input type="checkbox"/> Presumptive ESBL	<input type="checkbox"/> Presumptive AmpC	<input type="checkbox"/> Other phenotype
<input type="checkbox"/> Presumptive ESBL+ AmpC	<input type="checkbox"/> Presumptive carbapenemase	<input type="checkbox"/> Susceptible

Comments (include optional genotype or other results):



TEST FORM – SAMPLE ‘EURL M-4.4

Date the isolation procedure was started:

Please describe the results you have observed regarding this sample:

Visible growth in pre-enrichment:

Yes / No

Growth on ESBL/AmpC-selective plates:

Yes / No

Please describe the growth observed on ESBL/AmpC-selective plates? (choose only one option)

- Mixed culture containing typical *E. coli* colonies
- Mixed culture without typical *E. coli* colonies
- Pure culture of typical *E. coli* colonies
- Pure culture without typical *E. coli* colonies
- No growth

Results of species identification: (choose only one option)

- No isolates tested (sample negative)
- Presumptive ESBL/AmpC isolate identified as *E. coli* (sample considered positive)

Comments:

Did you perform carbapenemase selective plating?

Yes / No

Growth on CARBA-selective plates:

Yes / No

Growth on OXA-48 selective plates:

Yes / No

Results of species identification (isolates from carbapenemase selective plating): (choose only one option)

- No isolates tested (sample negative)
- Presumptive other carbapenemase isolate identified as *E. coli* (sample considered positive)
- Presumptive OXA-48 isolate identified as *E. coli* (sample considered positive)

Comments:

If you have found a presumptive carbapenemase positive isolate, please insert the results of antimicrobial susceptibility testing for the selected *E. coli* isolate, if you do not have a carbapenemase positive isolate and you have an ESBL presumptive isolate, please insert the results for this isolate (only one *E. coli* isolate is expected to be tested and these results will be evaluated in our database against the expected results).

Please confirm where the isolate tested for antimicrobial susceptibility originated from (compulsory):



**EU Reference Laboratory for Antimicrobial Resistance
Isolation of ESBL/AmpC- and carbapenemase-producers
External Quality Assurance System (Matrix EQAS) 2018**

- ESBL/ampC isolation on MacConkey with cefotaxime
- CARBA plate
- OXA-48 plate

Based on the results from the first AST panel, was the isolate found resistant to cefotaxime, ceftazidime or meropenem so that the second panel was tested?

Yes / No



**EU Reference Laboratory for Antimicrobial Resistance
Isolation of ESBL/AmpC- and carbapenemase-producers
External Quality Assurance System (Matrix EQAS) 2018**

AST results

Strain	Antimicrobial	Results and interpretation		
		≤ >	MIC-value (mg/L)	S / R
<i>E. coli</i> EURL M-4.4	Ampicillin, AMP			
	Azithromycin, AZI			
	Cefotaxime, FOT			
	Ceftazidime, TAZ			
	Chloramphenicol, CHL			
	Ciprofloxacin CIP			
	Colistin, COL			
	Gentamicin, GEN			
	Meropenem, MERO			
	Nalidixic acid, NAL			
	Sulfamethoxazole, SMX			
	Tetracycline, TET			
	Tigecycline, TGC			
Trimethoprim, TMP				

Second *E. coli* AST panel (confirmatory testing for ESBL/AmpC/carbapenemase-production)

Strain	Antimicrobial	Results and interpretation		
		≤ >	MIC-value (mg/L)	S / R
<i>E. coli</i> EURL M-4.4	Cefepime, FEP			
	Cefotaxime + clavulanic acid (F/C)			
	Cefotaxime, FOT			
	Cefoxitin, FOX			
	Ceftazidime, TAZ			
	Ceftazidime+ clavulanic acid (T/C)			
	Ertapenem, ETP			
	Imipenem, IMI			
	Meropenem, MERO			
Temocillin, TRM				

Conclusions of confirmatory phenotypic testing: (choose only one option and please note that the final result will be evaluated by the database)

Interpretation of PANEL 2 results:

<input type="checkbox"/> Presumptive ESBL	<input type="checkbox"/> Presumptive AmpC	<input type="checkbox"/> Other phenotype
<input type="checkbox"/> Presumptive ESBL+ AmpC	<input type="checkbox"/> Presumptive carbapenemase	<input type="checkbox"/> Susceptible

Comments (include optional genotype or other results):

TEST FORM – SAMPLE ‘EURL M-4.5



**EU Reference Laboratory for Antimicrobial Resistance
Isolation of ESBL/AmpC- and carbapenemase-producers
External Quality Assurance System (Matrix EQAS) 2018**

Date the isolation procedure was started:

Please describe the results you have observed regarding this sample:

Visible growth in pre-enrichment:

Yes / No

Growth on ESBL/AmpC-selective plates:

Yes / No

Please describe the growth observed on ESBL/AmpC-selective plates? (choose only one option)

- Mixed culture containing typical *E. coli* colonies
- Mixed culture without typical *E. coli* colonies
- Pure culture of typical *E. coli* colonies
- Pure culture without typical *E. coli* colonies
- No growth

Results of species identification: (choose only one option)

- No isolates tested (sample negative)
- Presumptive ESBL/AmpC isolate identified as *E. coli* (sample considered positive)

Comments:

Did you perform carbapenemase selective plating?

Yes / No

Growth on CARBA-selective plates:

Yes / No

Growth on OXA-48 selective plates:

Yes / No

Results of species identification (isolates from carbapenemase selective plating): (choose only one option)

- No isolates tested (sample negative)
- Presumptive other carbapenemase isolate identified as *E. coli* (sample considered positive)
- Presumptive OXA-48 isolate identified as *E. coli* (sample considered positive)

Comments:

If you have found a presumptive carbapenemase positive isolate, please insert the results of antimicrobial susceptibility testing for the selected *E. coli* isolate, if you do not have a carbapenemase positive isolate and you have an ESBL presumptive isolate, please insert the results for this isolate (only one *E. coli* isolate is expected to be tested and these results will be evaluated in our database against the expected results).

Please confirm where the isolate tested for antimicrobial susceptibility originated from (compulsory):

- ESBL/ampC isolation on MacConkey with cefotaxime



**EU Reference Laboratory for Antimicrobial Resistance
Isolation of ESBL/AmpC- and carbapenemase-producers
External Quality Assurance System (Matrix EQAS) 2018**

- CARBA plate
 OXA-48 plate

Based on the results from the first AST panel, was the isolate found resistant to cefotaxime, ceftazidime or meropenem so that the second panel was tested?

Yes / No



**EU Reference Laboratory for Antimicrobial Resistance
Isolation of ESBL/AmpC- and carbapenemase-producers
External Quality Assurance System (Matrix EQAS) 2018**

AST results

Strain	Antimicrobial	Results and interpretation		
		≤ >	MIC-value (mg/L)	S / R
<i>E. coli</i> EURL M-4.5	Ampicillin, AMP			
	Azithromycin, AZI			
	Cefotaxime, FOT			
	Ceftazidime, TAZ			
	Chloramphenicol, CHL			
	Ciprofloxacin CIP			
	Colistin, COL			
	Gentamicin, GEN			
	Meropenem, MERO			
	Nalidixic acid, NAL			
	Sulfamethoxazole, SMX			
	Tetracycline, TET			
	Tigecycline, TGC			
Trimethoprim, TMP				

Second *E. coli* AST panel (confirmatory testing for ESBL/AmpC/carbapenemase-production)

Strain	Antimicrobial	Results and interpretation		
		≤ >	MIC-value (mg/L)	S / R
<i>E. coli</i> EURL M-4.5	Cefepime, FEP			
	Cefotaxime + clavulanic acid (F/C)			
	Cefotaxime, FOT			
	Cefoxitin, FOX			
	Ceftazidime, TAZ			
	Ceftazidime+ clavulanic acid (T/C)			
	Ertapenem, ETP			
	Imipenem, IMI			
	Meropenem, MERO			
	Temocillin, TRM			

Conclusions of confirmatory phenotypic testing: (choose only one option and please note that the final result will be evaluated by the database)

Interpretation of PANEL 2 results:

<input type="checkbox"/> Presumptive ESBL	<input type="checkbox"/> Presumptive AmpC	<input type="checkbox"/> Other phenotype
<input type="checkbox"/> Presumptive ESBL+ AmpC	<input type="checkbox"/> Presumptive carbapenemase	<input type="checkbox"/> Susceptible

Comments (include optional genotype or other results):

TEST FORM – SAMPLE ‘EURL M-4.6



**EU Reference Laboratory for Antimicrobial Resistance
Isolation of ESBL/AmpC- and carbapenemase-producers
External Quality Assurance System (Matrix EQAS) 2018**

Date the isolation procedure was started:

Please describe the results you have observed regarding this sample:

Visible growth in pre-enrichment:

Yes / No

Growth on ESBL/AmpC-selective plates:

Yes / No

Please describe the growth observed on ESBL/AmpC-selective plates? (choose only one option)

- Mixed culture containing typical *E. coli* colonies
- Mixed culture without typical *E. coli* colonies
- Pure culture of typical *E. coli* colonies
- Pure culture without typical *E. coli* colonies
- No growth

Results of species identification: (choose only one option)

- No isolates tested (sample negative)
- Presumptive ESBL/AmpC isolate identified as *E. coli* (sample considered positive)

Comments:

Did you perform carbapenemase selective plating?

Yes / No

Growth on CARBA-selective plates:

Yes / No

Growth on OXA-48 selective plates:

Yes / No

Results of species identification (isolates from carbapenemase selective plating): (choose only one option)

- No isolates tested (sample negative)
- Presumptive other carbapenemase isolate identified as *E. coli* (sample considered positive)
- Presumptive OXA-48 isolate identified as *E. coli* (sample considered positive)

Comments:

If you have found a presumptive carbapenemase positive isolate, please insert the results of antimicrobial susceptibility testing for the selected *E. coli* isolate, if you do not have a carbapenemase positive isolate and you have an ESBL presumptive isolate, please insert the results for this isolate (only one *E. coli* isolate is expected to be tested and these results will be evaluated in our database against the expected results).

Please confirm where the isolate tested for antimicrobial susceptibility originated from (compulsory):

- ESBL/ampC isolation on MacConkey with cefotaxime



**EU Reference Laboratory for Antimicrobial Resistance
Isolation of ESBL/AmpC- and carbapenemase-producers
External Quality Assurance System (Matrix EQAS) 2018**

- CARBA plate
 OXA-48 plate

Based on the results from the first AST panel, was the isolate found resistant to cefotaxime, ceftazidime or meropenem so that the second panel was tested?

Yes / No



**EU Reference Laboratory for Antimicrobial Resistance
Isolation of ESBL/AmpC- and carbapenemase-producers
External Quality Assurance System (Matrix EQAS) 2018**

AST results

Strain	Antimicrobial	Results and interpretation		
		≤ >	MIC-value (mg/L)	S / R
<i>E. coli</i> EURL M-4.6	Ampicillin, AMP			
	Azithromycin, AZI			
	Cefotaxime, FOT			
	Ceftazidime, TAZ			
	Chloramphenicol, CHL			
	Ciprofloxacin CIP			
	Colistin, COL			
	Gentamicin, GEN			
	Meropenem, MERO			
	Nalidixic acid, NAL			
	Sulfamethoxazole, SMX			
	Tetracycline, TET			
	Tigecycline, TGC			
Trimethoprim, TMP				

Second *E. coli* AST panel (confirmatory testing for ESBL/AmpC/carbapenemase-production)

Strain	Antimicrobial	Results and interpretation		
		≤ >	MIC-value (mg/L)	S / R
<i>E. coli</i> EURL M-4.6	Cefepime, FEP			
	Cefotaxime + clavulanic acid (F/C)			
	Cefotaxime, FOT			
	Cefoxitin, FOX			
	Ceftazidime, TAZ			
	Ceftazidime+ clavulanic acid (T/C)			
	Ertapenem, ETP			
	Imipenem, IMI			
	Meropenem, MERO			
	Temocillin, TRM			

Conclusions of confirmatory phenotypic testing: (choose only one option and please note that the final result will be evaluated by the database)

Interpretation of PANEL 2 results:

<input type="checkbox"/> Presumptive ESBL	<input type="checkbox"/> Presumptive AmpC	<input type="checkbox"/> Other phenotype
<input type="checkbox"/> Presumptive ESBL+ AmpC	<input type="checkbox"/> Presumptive carbapenemase	<input type="checkbox"/> Susceptible

Comments (include optional genotype or other results):

TEST FORM – SAMPLE ‘EURL M-4.7’



**EU Reference Laboratory for Antimicrobial Resistance
Isolation of ESBL/AmpC- and carbapenemase-producers
External Quality Assurance System (Matrix EQAS) 2018**

Date the isolation procedure was started:

Please describe the results you have observed regarding this sample:

Visible growth in pre-enrichment:

Yes / No

Growth on ESBL/AmpC-selective plates:

Yes / No

Please describe the growth observed on ESBL/AmpC-selective plates? (choose only one option)

- Mixed culture containing typical *E. coli* colonies
- Mixed culture without typical *E. coli* colonies
- Pure culture of typical *E. coli* colonies
- Pure culture without typical *E. coli* colonies
- No growth

Results of species identification: (choose only one option)

- No isolates tested (sample negative)
- Presumptive ESBL/AmpC isolate identified as *E. coli* (sample considered positive)

Comments:

Did you perform carbapenemase selective plating?

Yes / No

Growth on CARBA-selective plates:

Yes / No

Growth on OXA-48 selective plates:

Yes / No

Results of species identification (isolates from carbapenemase selective plating): (choose only one option)

- No isolates tested (sample negative)
- Presumptive other carbapenemase isolate identified as *E. coli* (sample considered positive)
- Presumptive OXA-48 isolate identified as *E. coli* (sample considered positive)

Comments:

If you have found a presumptive carbapenemase positive isolate, please insert the results of antimicrobial susceptibility testing for the selected *E. coli* isolate, if you do not have a carbapenemase positive isolate and you have an ESBL presumptive isolate, please insert the results for this isolate (only one *E. coli* isolate is expected to be tested and these results will be evaluated in our database against the expected results).

Please confirm where the isolate tested for antimicrobial susceptibility originated from (compulsory):

- ESBL/ampC isolation on MacConkey with cefotaxime



**EU Reference Laboratory for Antimicrobial Resistance
Isolation of ESBL/AmpC- and carbapenemase-producers
External Quality Assurance System (Matrix EQAS) 2018**

- CARBA plate
 OXA-48 plate

Based on the results from the first AST panel, was the isolate found resistant to cefotaxime, ceftazidime or meropenem so that the second panel was tested?

Yes / No



**EU Reference Laboratory for Antimicrobial Resistance
Isolation of ESBL/AmpC- and carbapenemase-producers
External Quality Assurance System (Matrix EQAS) 2018**

AST results

Strain	Antimicrobial	Results and interpretation		
		≤ >	MIC-value (mg/L)	S / R
<i>E. coli</i> EURL M-4.7	Ampicillin, AMP			
	Azithromycin, AZI			
	Cefotaxime, FOT			
	Ceftazidime, TAZ			
	Chloramphenicol, CHL			
	Ciprofloxacin CIP			
	Colistin, COL			
	Gentamicin, GEN			
	Meropenem, MERO			
	Nalidixic acid, NAL			
	Sulfamethoxazole, SMX			
	Tetracycline, TET			
	Tigecycline, TGC			
Trimethoprim, TMP				

Second *E. coli* AST panel (confirmatory testing for ESBL/AmpC/carbapenemase-production)

Strain	Antimicrobial	Results and interpretation		
		≤ >	MIC-value (mg/L)	S / R
<i>E. coli</i> EURL M-4.7	Cefepime, FEP			
	Cefotaxime + clavulanic acid (F/C)			
	Cefotaxime, FOT			
	Cefoxitin, FOX			
	Ceftazidime, TAZ			
	Ceftazidime+ clavulanic acid (T/C)			
	Ertapenem, ETP			
	Imipenem, IMI			
	Meropenem, MERO			
Temocillin, TRM				

Conclusions of confirmatory phenotypic testing: (choose only one option and please note that the final result will be evaluated by the database)

Interpretation of PANEL 2 results:

<input type="checkbox"/> Presumptive ESBL	<input type="checkbox"/> Presumptive AmpC	<input type="checkbox"/> Other phenotype
<input type="checkbox"/> Presumptive ESBL+ AmpC	<input type="checkbox"/> Presumptive carbapenemase	<input type="checkbox"/> Susceptible

Comments (include optional genotype or other results):



TEST FORM – SAMPLE ‘EURL M-4.8

Date the isolation procedure was started:

Please describe the results you have observed regarding this sample:

Visible growth in pre-enrichment:

Yes / No

Growth on ESBL/AmpC-selective plates:

Yes / No

Please describe the growth observed on ESBL/AmpC-selective plates? (choose only one option)

- Mixed culture containing typical *E. coli* colonies
- Mixed culture without typical *E. coli* colonies
- Pure culture of typical *E. coli* colonies
- Pure culture without typical *E. coli* colonies
- No growth

Results of species identification: (choose only one option)

- No isolates tested (sample negative)
- Presumptive ESBL/AmpC isolate identified as *E. coli* (sample considered positive)

Comments:

Did you perform carbapenemase selective plating?

Yes / No

Growth on CARBA-selective plates:

Yes / No

Growth on OXA-48 selective plates:

Yes / No

Results of species identification (isolates from carbapenemase selective plating): (choose only one option)

- No isolates tested (sample negative)
- Presumptive other carbapenemase isolate identified as *E. coli* (sample considered positive)
- Presumptive OXA-48 isolate identified as *E. coli* (sample considered positive)

Comments:

If you have found a presumptive carbapenemase positive isolate, please insert the results of antimicrobial susceptibility testing for the selected *E. coli* isolate, if you do not have a carbapenemase positive isolate and you have an ESBL presumptive isolate, please insert the results for this isolate (only one *E. coli* isolate is expected to be tested and these results will be evaluated in our database against the expected results).

Please confirm where the isolate tested for antimicrobial susceptibility originated from (compulsory):



**EU Reference Laboratory for Antimicrobial Resistance
Isolation of ESBL/AmpC- and carbapenemase-producers
External Quality Assurance System (Matrix EQAS) 2018**

- ESBL/ampC isolation on MacConkey with cefotaxime
- CARBA plate
- OXA-48 plate

Based on the results from the first AST panel, was the isolate found resistant to cefotaxime, ceftazidime or meropenem so that the second panel was tested?

Yes / No



**EU Reference Laboratory for Antimicrobial Resistance
Isolation of ESBL/AmpC- and carbapenemase-producers
External Quality Assurance System (Matrix EQAS) 2018**

AST results

Strain	Antimicrobial	Results and interpretation		
		≤ >	MIC-value (mg/L)	S / R
<i>E. coli</i> EURL M-4.8	Ampicillin, AMP			
	Azithromycin, AZI			
	Cefotaxime, FOT			
	Ceftazidime, TAZ			
	Chloramphenicol, CHL			
	Ciprofloxacin CIP			
	Colistin, COL			
	Gentamicin, GEN			
	Meropenem, MERO			
	Nalidixic acid, NAL			
	Sulfamethoxazole, SMX			
	Tetracycline, TET			
	Tigecycline, TGC			
Trimethoprim, TMP				

Second *E. coli* AST panel (confirmatory testing for ESBL/AmpC/carbapenemase-production)

Strain	Antimicrobial	Results and interpretation		
		≤ >	MIC-value (mg/L)	S / R
<i>E. coli</i> EURL M-4.8	Cefepime, FEP			
	Cefotaxime + clavulanic acid (F/C)			
	Cefotaxime, FOT			
	Cefoxitin, FOX			
	Ceftazidime, TAZ			
	Ceftazidime+ clavulanic acid (T/C)			
	Ertapenem, ETP			
	Imipenem, IMI			
	Meropenem, MERO			
	Temocillin, TRM			

Conclusions of confirmatory phenotypic testing: (choose only one option and please note that the final result will be evaluated by the database)

Interpretation of PANEL 2 results:

<input type="checkbox"/> Presumptive ESBL	<input type="checkbox"/> Presumptive AmpC	<input type="checkbox"/> Other phenotype
<input type="checkbox"/> Presumptive ESBL+ AmpC	<input type="checkbox"/> Presumptive carbapenemase	<input type="checkbox"/> Susceptible

Comments (include optional genotype or other results):

MIC deviations: obtained and expected readings and interpretations

Lab#	Strain	Panel	Antimicrobial	Read value	Expected Value	Inter-pretation	Expected Interpretation	Score
2	EURL M-4.4	1	Chloramphenicol CHL	<= 8	32	S	R	0
2	EURL M-4.4	1	Sulfamethoxazole SMX	16	>1024	S	R	0
11	EURL M-4.1	1	Nalidixic acid NAL	>128	8	R	S	0
16	EURL M-4.8	2	Imipenem IMI	0.5	2	S	R	0
17	EURL M-4.4	2	Cefoxitin FOX	32	4	R	S	0
17	EURL M-4.4	1	Ciprofloxacin CIP	1	<=0.015	R	S	0
17	EURL M-4.4	2	Ertapenem ETP	>2	<=0.015	R	S	0
17	EURL M-4.4	2	Imipenem IMI	4	0.25	R	S	0
17	EURL M-4.4	1	Meropenem MERO	2	<=0.03	R	S	0
17	EURL M-4.4	2	Meropenem MERO	4	<=0.03	R	S	0
17	EURL M-4.4	1	Nalidixic acid NAL	32	<=4	R	S	0
17	EURL M-4.4	1	Tetracycline TET	64	<=2	R	S	0
17	EURL M-4.4	1	Trimethoprim TMP	>32	0.5	R	S	0
21	EURL M-4.5	1	Tetracycline TET	64	64	S	R	0
22	EURL M-4.8	1	Chloramphenicol CHL	<=8	32	S	R	0
22	EURL M-4.8	2	Imipenem IMI	0.5	2	S	R	0
26	EURL M-4.4	1	Chloramphenicol CHL	<=8	32	S	R	0
26	EURL M-4.4	1	Sulfamethoxazole SMX	16	>1024	S	R	0
32	EURL M-4.8	1	Chloramphenicol CHL	<=8	32	S	R	0
32	EURL M-4.8	2	Imipenem IMI	0.25	2	S	R	0
33	EURL M-4.8	1	Trimethoprim TMP	>32	>32	S	R	0
36	EURL M-4.5	1	Chloramphenicol CHL	<=8	32	S	R	0
40	EURL M-4.1	1	Trimethoprim TMP	<=0.25	>32	S	R	0

ESBL phenotype deviations: obtained and expected readings and interpretations

Lab#	Strain	ESBL prediction	Expected ESBL prediction	Score*
34	EURL M-4.7	Not isolated	Presumptive ESBL	-
39	EURL M-4.7	Not isolated	Presumptive ESBL	-
21	EURL M-4.1	Other phenotype	Presumptive pAmpC	0
29	EURL M-4.2	Presumptive OXA-48	Presumptive carbapenemase	-
21	EURL M-4.3	Presumptive ESBL	Susceptible	-
20	EURL M-4.3	Presumptive ESBL	Susceptible	-
59	EURL M-4.3	Presumptive ESBL	Susceptible	-
17	EURL M-4.4	Presumptive carbapenemase	Presumptive ESBL	0
23	EURL M-4.8	Presumptive OXA-48	Presumptive carbapenemase	-

* Score - : Not regarded as a deviation

Accepted deviations: obtained and expected readings and interpretations

Lab#	Strain	Panel	Antimicrobial	Read value	Expected Value	Inter-pretation	Expected Interpretation	Score
4	EURL M-4.1	2	Cefepime FEP	0.12	0.25	S	R	0
11	EURL M-4.8	1	Chloramphenicol CHL	16	32	S	R	0
12	EURL M-4.8	1	Chloramphenicol CHL	16	32	S	R	0
16	EURL M-4.1	2	Cefepime FEP	0.12	0.25	S	R	0
17	EURL M-4.4	1	Chloramphenicol CHL	16	32	S	R	0
19	EURL M-4.8	1	Nalidixic acid NAL	16	32	S	R	0
20	EURL M-4.1	2	Cefepime FEP	0.12	0.25	S	R	0
20	EURL M-4.4	1	Chloramphenicol CHL	16	32	S	R	0
21	EURL M-4.8	1	Chloramphenicol CHL	16	32	S	R	0
22	EURL M-4.8	1	Nalidixic acid NAL	16	32	S	R	0
23	EURL M-4.1	2	Cefepime FEP	0.12	0.25	S	R	0
23	EURL M-4.8	1	Chloramphenicol CHL	16	32	S	R	0
29	EURL M-4.1	2	Cefepime FEP	0.12	0.25	S	R	0
29	EURL M-4.8	1	Nalidixic acid NAL	16	32	S	R	0
32	EURL M-4.8	1	Nalidixic acid NAL	16	32	S	R	0
33	EURL M-4.1	2	Cefepime FEP	0.12	0.25	S	R	0
33	EURL M-4.8	1	Chloramphenicol CHL	16	32	S	R	0
34	EURL M-4.8	1	Chloramphenicol CHL	16	32	S	R	0
39	EURL M-4.8	1	Chloramphenicol CHL	16	32	S	R	0
39	EURL M-4.8	1	Nalidixic acid NAL	16	32	S	R	0
40	EURL M-4.1	2	Cefepime FEP	0.12	0.25	S	R	0
45	EURL M-4.1	2	Cefepime FEP	0.12	0.25	S	R	0
56	EURL M-4.8	1	Chloramphenicol CHL	16	32	S	R	0
58	EURL M-4.8	1	Chloramphenicol CHL	16	32	S	R	0
59	EURL M-4.1	2	Cefepime FEP	0.12	0.25	S	R	0
59	EURL M-4.8	1	Chloramphenicol CHL	16	32	S	R	0

National Food Institute
Technical University of Denmark
Kemitorvet
2800 Lyngby

Tel: 35 88 77 00

ISBN: 978-87-93565-63-0

www.food.dtu.dk